



PHOTOMETRIC TEST REPORT

Testing Laboratory

UL International Italia s.r.l.

Via Delle Industrie 5&6, 20061 Carugate (MI) - IT

Customer Company & Address

ALDO BERNARDI SRL

Via Vittorio Veneto 2/A

Paderno Del Grappa, Tr, 31010

IT

Manufacturer: ALDO BERNARDI SRL
Model Name: EDC57C 15W827 230A 220/240
Model Number: EDC57C 15W827 230A 220/240
Product Type: LED Luminaire
Product Description: LED Luminaire equipped with one LED COB directly powered by main voltage. The luminaire optic is composed by curved transparent lens.

LED Model: VOSSLOH COD.559776 BIANCO CALDO 2700

Power Supply Model: N/A

Electrical Ratings:

Input Voltage (V): 230

Input Current (A): -

Input Power (W) 17

Input Frequency (Hz): 50

Photometric Measurement: Absolute

Reference Standard: EN 13032-4:2015 sec. 6.2, 6.4, 6.5

Sample number: 1723737

Total report pages: 45

This report shall not be reproduced except in full without the written approval of the Laboratory. The results in this report apply to the test sample(s) mentioned above at the time of the testing period only and are not to be used to indicate applicability to other similar products. This report does not imply that the products(s) has met the criteria for certification.

Prepared By

Giovanni Di Martino

Name & Signatory

Approved By

Walter Parmiani

Name & Signatory



TEST RESULTS SUMMARY

Test Method: GonioPhotometer
Photometric Measurement: Absolute
Test Date: 2018/7/25

Environmental Conditions:

		Unit
Ambient Temperature:	25.6	°C
Relative Humidity:	55	%

Electrical Conditions:

		Unit
Input Voltage:	229.99	V
Input Current:	0.07708	A
Input Power:	17.567	W
Input frequency:	50	Hz
PF:	0.9919	
THDi:	12.59	%

Photometric results:

		Unit
Luminous Flux:	1001	Lm
System Efficacy:	57.0	Lm/W
Peak Intensity:	875.2	cd
LOR	100	%
DLOR	100	%
ULOR	0	%
DFF	100	%
UFF	0	%
Pre-burning time:	0.00	hrs
Stabilization time:	86.00	min
Test distance:	8.62	m

Dimensions:

	L	W	H	Unit
Sample:	80	-	220	mm
Luminous Area:	80	-	15	mm

CIE Flux Code:

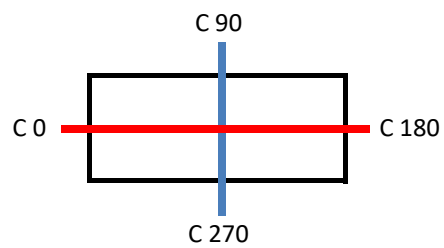
92	97	100	100	100
----	----	-----	-----	-----



Picture of the tested sample:

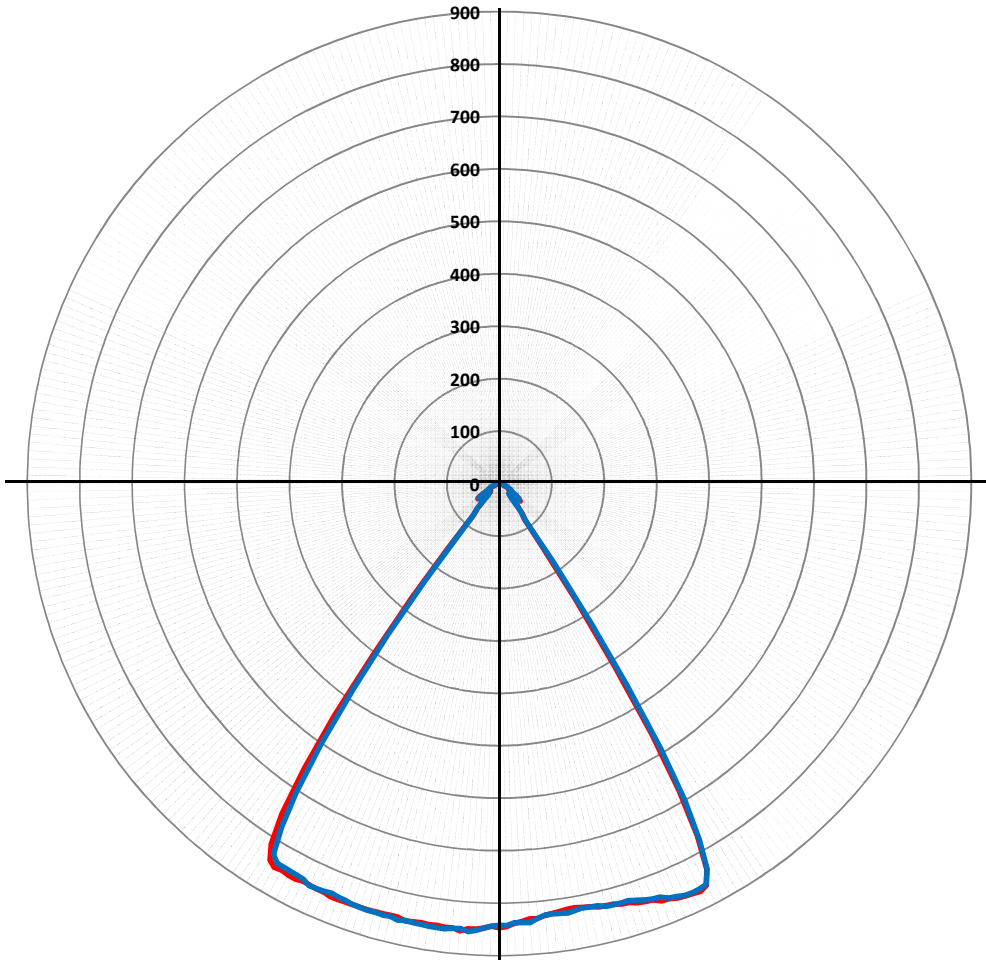


Coordinates system:

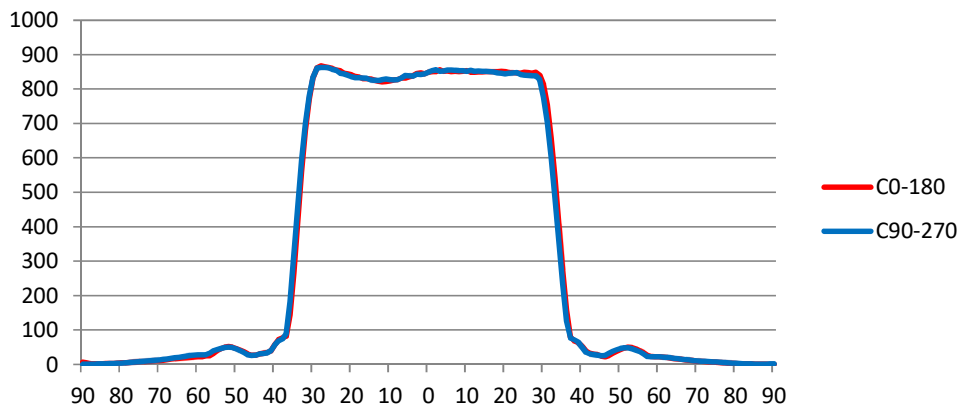




POLAR PLOT (cd)



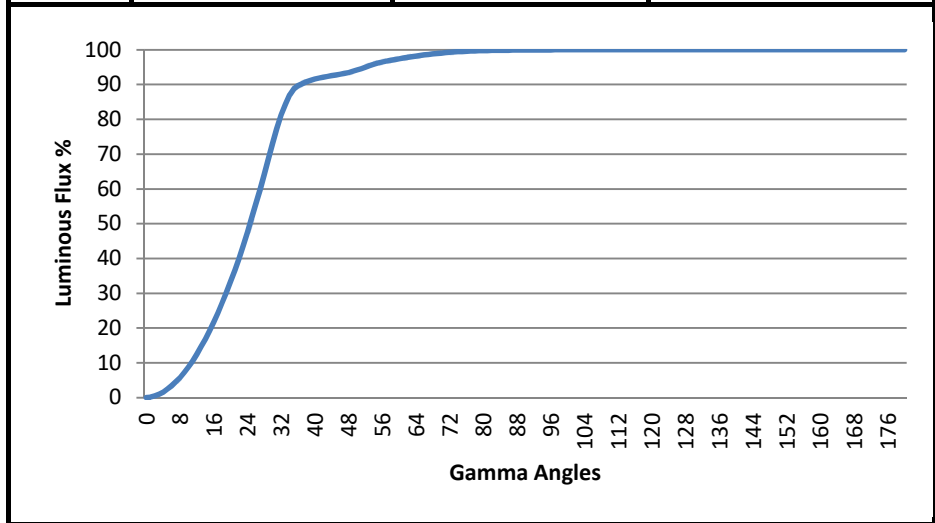
CARTESIAN PLOT



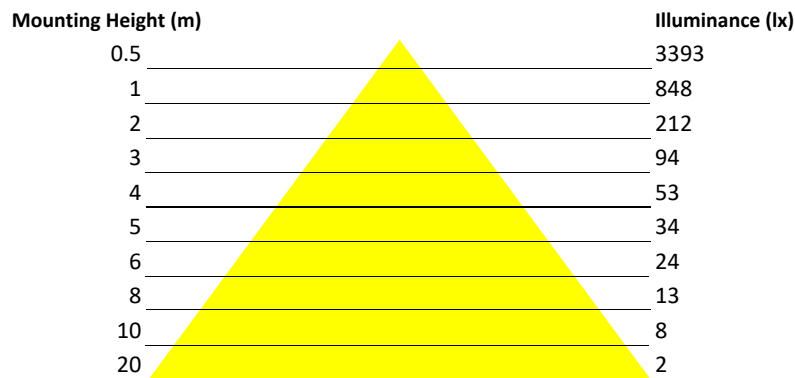


ZONAL LUMEN SUMMARY

	Summary Zonal Lumens	Zonal Lumens - % Lamp	Zonal Lumens - % Fixture
0 to 30	709.84	70.91	70.91
0 to 40	914.96	91.40	91.40
0 to 60	973.62	97.26	97.26
0 to 90	999.81	99.88	99.88
40 to 90	84.85	8.48	8.48
60 to 90	26.19	2.62	2.62
90 to 180	1.06	0.11	0.11
0 to 180	1001.01	100.00	100.00



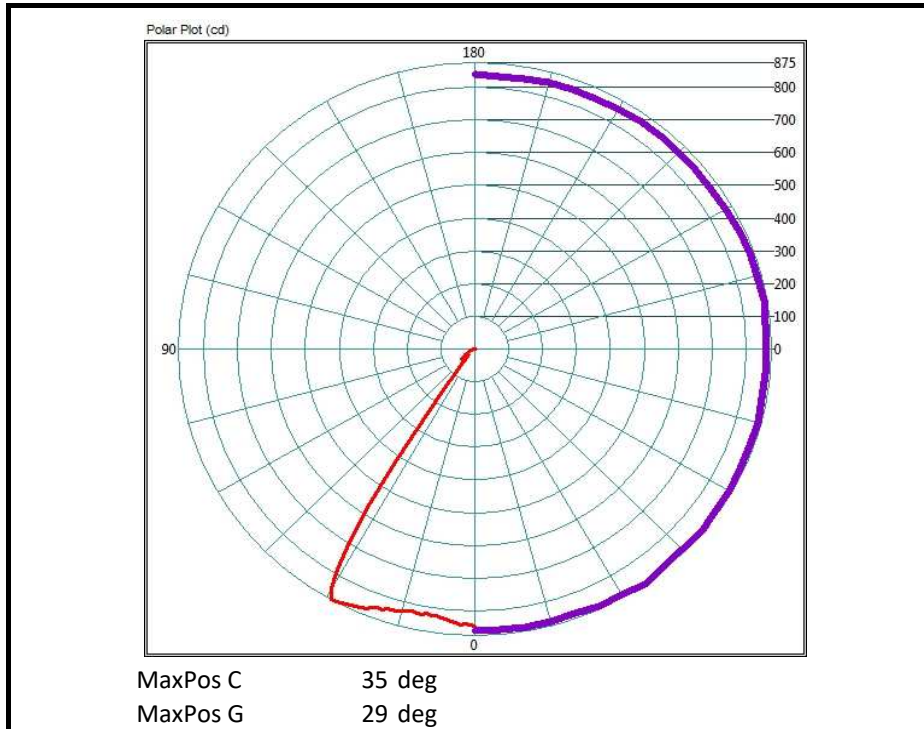
CONE DIAGRAM



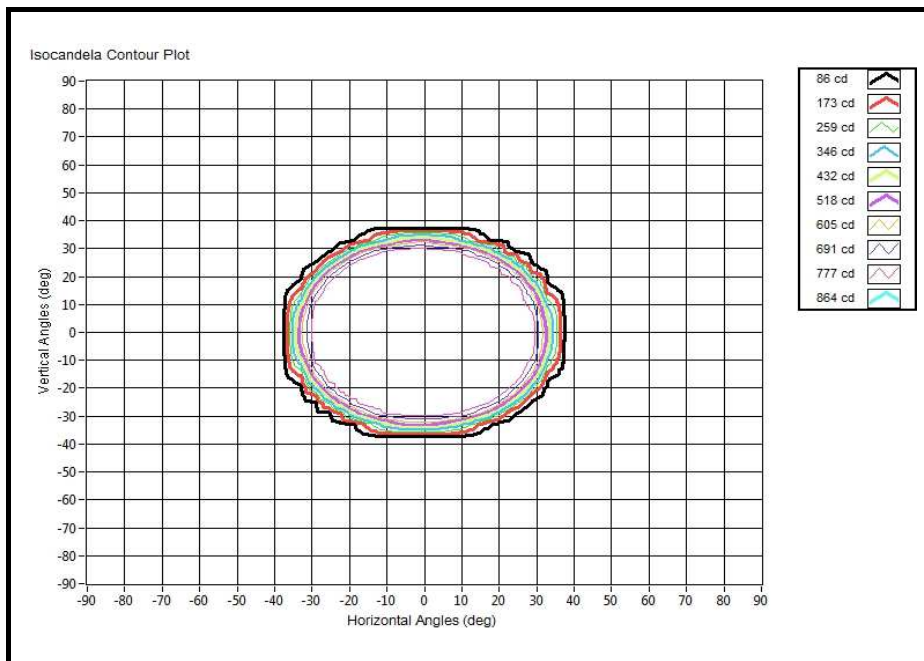
Beam Angle: 67.8 x 67.71 deg



MAX CONE AND PLANE (CD)



ISOCANDELA PLOT





INTENSITY TABLE (cd)

	0	5	10	15	20	25	30	35
0	848.27	848.27	848.27	848.27	848.27	848.27	848.27	848.27
1	843.94	841.93	843.34	842.02	842.21	839.52	840.53	844.38
2	846.68	841.38	842.99	838.89	838.98	838.95	843.74	841.71
3	844.49	841.68	848.03	843.49	841.42	842.14	845.1	845.03
4	838.88	836.57	836.51	839.62	833.95	833.7	837.11	838.98
5	835.94	837.04	835.31	832.56	834.51	832.13	830.46	835.08
6	831.84	831.52	833.32	829.13	832.73	832.05	828.75	831.74
7	832.11	829.03	828.78	826.34	829.6	830.07	826.34	827.66
8	827.42	823.72	828.05	827.21	824.8	825.89	824.14	823.4
9	825.99	822.8	823.39	827.19	821.58	827.9	823.23	823.1
10	823.91	820.49	824.42	823.43	820.75	824.14	820.81	821.02
11	821.9	822.3	825.78	820.78	821.64	820.98	821.55	824.8
12	821.05	822.66	823.21	821.21	822.56	824.15	823.37	826.52
13	823.02	821.96	821.68	823.45	825.43	827.73	824.08	823.32
14	825.05	826.33	823.56	823.75	825.24	828.88	826.07	825.56
15	829.24	824.74	826.73	827.99	826.79	828.04	829.87	828.5
16	829.76	827.3	827.92	831.39	828.77	828.53	830.1	834.57
17	830.4	830.69	831.27	829.65	830.39	836.71	834.22	833.17
18	834.73	831.6	831.89	832.39	832.61	836.26	837.13	835.38
19	836.24	836.41	837.06	833.89	834.8	841.2	838.63	841.82
20	841.21	840.42	839.34	837.15	839.1	841.94	840.71	841.27
21	844.07	840.63	843.19	841.05	842.46	847.32	845.29	845.6
22	846.05	846.09	847.07	843.44	844.12	850.37	851.94	854.24
23	853.55	847.98	847.03	849.72	849.86	852.21	856.72	856.86
24	855.23	853.32	851.44	851.92	854.36	859.57	858.1	861.71
25	860.22	860.08	858.67	859.64	857	862.55	859.72	863.02
26	862.94	862.44	863.56	861	861.9	867.4	865.21	866.37
27	864.25	863.39	863.49	860.96	862.85	869.11	868.44	872.22
28	867.06	866.67	863.68	862.97	863.82	868.39	868.32	873.55
29	861.61	862.08	862.45	860.47	860.94	869.26	866.95	875.22
30	834.14	831.19	829.82	831.02	830.82	836.03	841.42	847.68
31	770.6	773.12	767.12	774.97	771.33	774.18	782.83	784.82
32	679.07	683.35	678.39	683.13	681.7	686.38	695.24	695
33	559.19	564.44	554.81	565.52	564.31	570.16	579.09	578.37
34	412.81	418.99	408.66	412.11	419.94	429.44	439.44	438.74
35	264.73	272.43	264.92	267.72	280.38	285.08	291.28	298.08
36	143.69	152.98	146.19	150.43	158.24	159.59	160.77	168.47
37	81.8	84.4	83.82	82.96	85.1	85.45	83.98	86.27
38	77.17	78.35	78.35	78.19	78.32	78.37	77.85	77.32
39	72.03	72.95	73.34	73.23	73.3	72.95	72.44	72.79
40	56.17	57.28	57.81	58.58	58.36	57.99	58.77	59.61
41	38.65	38.73	39.33	40.45	40.1	39.94	40.52	41.32
42	34.18	34.5	34.65	34.78	35.1	35.27	35.29	35.34



INTENSITY TABLE (cd)

	40	45	50	55	60	65	70	75
0	848.27	848.27	848.27	848.27	848.27	848.27	848.27	848.27
1	840.12	838.8	838.5	844.18	844.06	844.65	845.26	844.07
2	839.17	838.74	840.67	841.33	841.26	841.03	845.39	844.99
3	842.32	841.92	846.01	844.11	841.69	840.79	845.01	844.93
4	833.99	835.13	839.49	841.44	835.55	836.69	838.99	841.65
5	831.15	833.76	833.87	835.29	833.03	835.55	837.58	837.44
6	828.76	831.54	829.5	834.3	830.02	832.79	832.66	835.36
7	826.4	828.73	826.35	832.24	829.76	831.74	830.78	833.61
8	824.06	827.58	823.25	827.28	830.39	825.64	828.81	829.15
9	822.11	824.57	825.81	827.94	825.71	826.34	826.16	828.74
10	823.07	826.25	826.97	826.55	826.62	825.69	827.13	827.5
11	823.69	825.67	826.94	825.43	825.2	825.59	826.01	826.68
12	824.4	823.55	826.44	824.38	826.03	828.43	828.56	828.06
13	826.87	828.2	828.95	824.43	826.1	827.73	828.37	827.21
14	826.23	827.85	827.5	828.26	826.56	829.68	826.63	825.83
15	829.25	828.1	832.49	830.63	830.75	829.23	826.85	827.2
16	834.01	831.92	835.74	831.9	835.53	828.74	829.14	828.56
17	833.99	834.52	835.54	833.08	835.02	832.18	830.25	830.52
18	838.11	841.36	838.36	836.31	837.54	834.57	835.83	836.15
19	839.11	841.35	843.14	839.05	839.77	838.52	840.19	841.01
20	843.68	847.07	844.78	845.73	844.91	839.22	838.5	840.3
21	849.32	848.78	851.87	848.52	845.88	843.37	841.81	846.08
22	850.5	855.74	853.78	854.29	848.26	848.87	846.66	851.41
23	856.77	858.12	859.67	859.25	852.96	852.15	850.96	853.26
24	863.92	861.57	864.08	862.47	858.84	856.75	856.35	859.98
25	866.58	865.47	865.88	868.35	865.81	864.43	858.97	863.41
26	872.42	870.49	867.16	868.92	868.77	866.96	864.14	866.61
27	870.13	872.73	871.25	867.27	867.05	867.55	869.89	869.88
28	870.15	872.23	869.66	869.63	864.55	865.54	867.9	867.65
29	868.19	867.82	871.44	865.58	864.85	862.92	862.55	865.46
30	844.27	844.11	848.54	846.12	842.44	841.23	841.29	844.65
31	784.48	784.16	787.89	786.13	780.81	779.08	779.9	782.01
32	689.12	691.13	690.71	689.97	685.4	686.72	686.57	692.8
33	575.33	575.6	576.66	582.53	575.9	575.11	578.45	581.73
34	438.95	447.07	443.11	451.09	452.41	453.32	451.83	455
35	297.64	307.51	298.98	314.49	317.62	318.78	318.95	316.06
36	164.84	167.5	162.29	169.72	178.8	182.13	183.12	177.13
37	85.16	84.4	85.63	86.79	86.74	89.69	87.82	83.7
38	76.93	76.17	76.48	76.98	77.15	77.38	76.8	75.72
39	72.39	71.03	71.72	70.8	71.66	71.21	71.55	69.94
40	58.55	57.27	58.37	56.82	57.92	58.75	59.34	56.97
41	40.53	39.71	40.79	39.74	40.66	40.86	41.64	40.11
42	35.05	34.78	35.03	35.04	35.3	35.52	35.59	35.01



INTENSITY TABLE (cd)

	80	85	90	95	100	105	110	115
0	848.27	848.27	848.27	848.27	848.27	848.27	848.27	848.27
1	846.41	843.93	844.17	844.51	845.07	844.59	845.92	850.4
2	844.55	844.28	841.76	844.06	847.4	845.41	846.91	847.83
3	844.61	843.76	842.78	847.31	844.54	845.23	845.87	846.49
4	838.49	840.39	837.66	841.43	839.96	839.4	842.32	843.61
5	836.54	836.42	838.49	841.42	840.59	838.59	842.54	839.51
6	832.48	837.73	838.94	838.46	839.69	836.41	842.08	838.24
7	829.24	832.63	831.58	834.11	836.72	833.27	836.61	835.86
8	826.02	827.8	827.38	828.3	834.68	831.95	832.96	833.16
9	827.04	828.82	826.27	827.35	831.34	833.41	828.6	833.01
10	826.91	825.69	827.43	825.01	829.2	829.04	827.29	829.74
11	826.63	823.03	829.25	824.79	830.45	830.88	828.22	830.77
12	824.88	825.41	826.82	826.39	827.57	830.38	831.67	830.74
13	823.77	824.94	824.25	825.71	830	829.43	831.03	829.84
14	827.2	825.94	825.55	829.45	830.78	828.26	828.37	830.8
15	827.86	829.3	826.18	831.93	829.87	831.65	828.82	831.04
16	827.38	832.54	830.93	831.29	833.94	831.19	831.94	830.34
17	832.45	831.8	832.14	831.42	833.32	833.24	836.12	832.34
18	833.17	830.37	833.04	830.47	834.9	833.73	833.36	831.37
19	834.76	834.61	832.46	833.01	838.07	835.94	832.98	833.94
20	841.15	836.4	836	835.59	836.4	834.93	836.4	837.16
21	840.53	839.53	840.31	839.84	837.23	839.64	842.05	837.7
22	844.55	844.5	844.13	843.01	844.91	842.04	845.38	843.33
23	849.79	847.98	845.96	845.02	846.44	847.14	846.35	844.55
24	853.09	853.07	853.96	851.72	847.95	847.54	853.17	852.32
25	860.48	857.13	856.73	854.39	851.41	853.8	856.22	854.95
26	862.82	860.94	861.22	859.38	859.53	858.69	859.67	859.94
27	865.49	863.49	862.25	861.69	863.25	861	859.31	861.93
28	863.68	863.85	862.46	862.52	868.19	863.3	860.31	860.05
29	861.45	860.11	860.61	861.5	866.08	860.76	862.81	860.34
30	839.39	836.75	835.79	836.25	839.02	835.82	836.7	836.05
31	781.47	779.83	779.97	782.32	780.82	778.6	780.4	777.33
32	696.01	694.17	699.7	701.55	697.7	698.6	698.15	694.82
33	586.48	585.71	592.69	591.57	584.31	588.34	583.85	585.67
34	459.49	458.67	457.21	460.71	454.23	456.51	454.01	453.43
35	320.47	325.05	320.59	324.64	315.56	317.62	309.8	315.7
36	184.2	191.91	182.73	188.81	185.01	190.78	179.36	183.87
37	88.47	90.92	90.22	90.99	93.86	91.98	87.46	90.2
38	75.74	75.16	74.22	72.9	71.96	71.53	69.92	69.54
39	70.16	70.01	68.6	67.85	67.11	66.26	64.52	64.28
40	57.69	57.84	56.31	56.33	55.2	54.89	53.34	53.53
41	39.94	40.15	39.4	39.82	38.39	38.26	37.06	37.32
42	34.74	34.32	33.67	33.09	32.31	32.25	31.43	30.73



INTENSITY TABLE (cd)

	120	125	130	135	140	145	150	155
0	848.27	848.27	848.27	848.27	848.27	848.27	848.27	848.27
1	848.43	849.12	851.79	853.33	852.63	852.02	855.67	853.11
2	847.57	850.57	855.03	856.26	851.02	854.86	858.27	856.45
3	848.3	853.79	850.29	852.32	854.72	857.84	853.58	853.41
4	843.64	847.51	847.27	849.64	848.25	848.59	850.71	849.21
5	840.88	845.4	848.55	843.58	846.19	847.56	845.89	847.88
6	841.21	844.18	839.7	843.07	845.36	842.08	843.49	844.52
7	835.06	838.57	836.68	838.15	838.78	840.48	840.45	841.9
8	833.79	833.19	836.24	835.39	834.99	836.73	837.08	841.62
9	830.8	832.16	833.58	833.23	833.53	834.64	836.12	840.58
10	828.69	828.97	831.58	831.64	831.29	832.71	832.99	837.56
11	830.69	830.37	832.79	830.35	831.08	830.75	832.25	832.62
12	828.36	832.68	832.71	832.22	830.73	832.28	832.03	831.5
13	829.98	830.07	831.79	830.63	831.34	832.13	831.44	831.26
14	830.1	833.49	835.34	834.06	832.56	831.41	833.12	833.23
15	830.61	836.48	833.11	838.04	832.29	833.32	834.31	834.39
16	831.9	833.55	834.38	834.98	834.54	835.21	836	836.28
17	833.86	835.68	836.37	833.3	833.56	834.13	835	835.55
18	833.81	837.44	834.16	833.95	833.81	837.48	834.52	833.05
19	836.32	836.16	837.36	834.98	835.01	840.77	835.63	834.13
20	837.83	835.43	841.2	835.55	836.62	837.81	835.85	833.65
21	839.4	838.85	839.38	837.24	835.99	837.96	833.89	835.06
22	844	845.05	840.09	839.16	840.45	836.03	836.58	837.11
23	844.86	844.92	843.7	840.84	838.77	837.68	839.36	833.9
24	848.99	849.13	846.37	845.7	842.91	839.48	842.42	838.66
25	850.86	850.04	847.74	846.23	845.62	844.91	843.93	843.29
26	854.39	853.97	854.84	850.85	847.21	845.8	849.11	843.33
27	856.48	858.68	855.97	854.69	851.08	850	849.2	847.93
28	855.8	857.63	854.87	855.39	852.12	851.4	849.5	846.17
29	852.62	852.21	852.04	851.16	850.7	849.22	848.17	845.87
30	831.02	832.03	830.27	835.76	834.57	830.97	831.52	825.49
31	773.68	771.37	771.99	779.93	774.31	772.88	776.94	768.71
32	690.46	687.57	686.36	692.23	686.62	684.6	690.04	679.9
33	583.81	581.79	574.47	580.99	575.51	581.37	583.09	576.46
34	454.24	453.19	445.18	459.79	454.2	461.23	466.95	462.2
35	318.22	318.91	311.98	327.82	323.49	332.8	335.16	337.78
36	185.21	187.58	184.05	192.24	184.13	192.33	192.42	196.97
37	89.43	90.36	89.99	92.35	87.19	87.19	86.59	89.84
38	68.85	68.64	68.39	68.27	67.39	67.14	67.32	67.15
39	63.32	63.34	63.04	63.2	62.3	62.17	62.07	62.22
40	52.19	52.19	52.38	53.51	52.61	52.46	53.3	53.37
41	36.23	36.33	36.79	38.28	37.98	38.09	39.49	39.28
42	30.36	30.64	30.84	31.11	31.28	31.57	31.87	32.19



INTENSITY TABLE (cd)

	160	165	170	175	180	185	190	195
0	848.27	848.27	848.27	848.27	848.27	848.27	848.27	848.27
1	852.14	854.95	853.68	854.75	850.53	847.98	846.4	846.88
2	855.77	858.23	854.27	857.22	850.89	849.75	852.1	849.53
3	857.98	857.23	854.38	854.41	856.1	854.92	853.61	847.62
4	853.63	849.41	849.52	851.65	851.54	851.89	850.17	847.82
5	850.06	848.16	850.27	849.2	852.1	854.17	854.54	849.34
6	846.44	845.73	845.96	845.48	850.4	854.26	852.66	852.03
7	844.97	842.78	843.17	845.24	851.51	852.37	851.95	853.75
8	839.03	839.46	840.01	840.43	850.31	854.36	853.69	848.8
9	836.27	837.7	836.62	840.53	851.15	849.75	851.11	851.71
10	834.34	835.49	835.39	836.56	853.15	852.15	852.52	853.05
11	834.05	833.67	836.3	833.38	848.76	852.78	852.42	849.81
12	835.95	832.14	832.39	832.81	848.77	850.41	850.2	848.34
13	836.35	830.92	833.51	830.31	849.6	848.67	848.05	851.2
14	832.17	832.88	832.39	830.39	849.99	849.86	847.58	848.43
15	832.4	835.82	834.02	831.44	850.61	848.82	847.04	846.15
16	835.75	834.77	835.76	831.41	850.48	848.59	850.87	846.18
17	837.49	834.56	837.37	831.32	850.34	850.13	851.86	844.35
18	835.7	833.07	834.83	832.83	850.7	847.93	851.55	843.86
19	832.59	835.06	834.44	830.69	851.16	850.87	851.07	846.11
20	832.69	833.55	835.1	833.42	850.88	852.16	851.06	844.46
21	833.12	836.67	831.65	831.12	848.11	849.72	848.65	844.53
22	834.59	835.06	832.04	830.65	847.65	845.14	846.58	844.23
23	833.58	835.18	835.08	832.83	846.48	844.54	848.87	844.29
24	838.42	837.25	835.38	835.32	845.52	847.51	846.7	846.14
25	841.19	836.54	838.03	837.12	848.37	844.93	849.15	845.1
26	844.3	838.68	839.78	835.55	848.11	847.09	849.4	846.55
27	848.15	841.07	838.73	838.05	846	845.48	847.85	848.72
28	845.3	842.64	840.58	837.86	848.54	842.32	845.82	843.32
29	843.53	841.68	837.39	836.75	840.34	838.37	839.27	839.12
30	827.66	824.38	824.45	819.9	812.27	809.34	806.5	807.74
31	774.75	771.9	771.61	767.51	753.71	752.02	748.12	750.97
32	689	686.91	692.29	685.28	658.12	663.44	658.62	666.7
33	580.19	576.9	579.21	572.64	541.6	548.98	538.25	551.97
34	464.35	455.99	456.03	443.68	407.67	418.72	406.39	414.43
35	335.14	320.75	324.8	311.34	274.29	280.42	270.94	277.16
36	199.01	187.13	193.18	184.35	159.17	164.6	159.71	165.52
37	93.79	90.71	95	91.1	80.12	85.04	82.57	84.91
38	68.22	68.86	68.86	68.53	67.69	67.75	67.67	67.93
39	63.76	64.03	64.23	64.21	62.99	63.22	63.05	63.46
40	55.31	55.32	56.14	55.49	53.21	53.19	53.08	54.08
41	41.07	41.68	41.99	41.2	39.12	38.87	38.69	39.27
42	32.97	33.48	33.47	33.04	32.24	32.26	32.19	32.29



INTENSITY TABLE (cd)

	200	205	210	215	220	225	230	235
0	848.27	848.27	848.27	848.27	848.27	848.27	848.27	848.27
1	847.53	842.87	843.48	847.28	848.6	843.01	844.98	843.75
2	848.65	847.22	848.4	851.47	850.56	848.74	849.64	848.32
3	847.13	847.59	851.1	850.16	850.93	852.28	850.34	849.43
4	847.29	845.91	850.8	851.76	851.91	850.99	847.8	847.63
5	847.48	847.97	847.55	850.46	848.81	847.47	850.37	850.15
6	848.02	847.68	852.32	848.77	851.51	847.75	851.33	849.28
7	847.41	848.76	849.56	851.33	848.4	847.27	847.72	850.25
8	846.58	847.04	850.1	847.51	848.27	849.09	849.27	847.63
9	850.98	847.14	851.44	850.55	851.73	851	845.97	845.92
10	848.73	847.4	850.68	851.7	850.15	849.26	846.23	848.34
11	847.56	847.72	851.88	849.39	846.78	846.23	846.22	851.06
12	848.14	849.12	849.95	850.11	848.27	846.52	846.73	848.6
13	846.83	850.52	848.05	848.7	846.91	848.98	849.56	851.24
14	846.7	852.56	846.09	846.81	846.3	850.72	851.81	850.91
15	846.35	849.14	845.34	845.57	848.03	849.18	849.96	847.63
16	848.37	846.85	842.8	845.24	843.81	846.27	844.69	847.91
17	845.88	846.61	840.98	844.19	843.75	842.22	842.63	846.43
18	847.81	843.74	838.68	845.04	843.58	841.89	842.01	843.69
19	844.15	841.55	837.76	839.5	839.99	844.4	840.61	843.87
20	842.46	839.66	837.1	836.61	840.45	841.81	842.16	844.46
21	842.33	838.84	837.14	837.32	838.43	839.77	840.88	841.83
22	843.22	839.68	837.6	838.47	837.31	838.19	840	844.54
23	842.79	839.69	837.74	839.82	838.56	840.71	840.22	841.6
24	843.69	841.09	837.69	841.43	841.04	842.43	839.91	839.16
25	844.23	846.19	841.79	839.82	841.26	841.43	839.81	840.61
26	845.09	845.14	844.6	841.61	840.19	839.1	840.35	838.3
27	845.27	841.71	841.22	839.69	840.86	840.18	840.42	837.34
28	844.01	839.54	840.09	836.75	832.8	835.17	836.53	836.11
29	837.1	837.05	831.8	831.61	832.07	830.31	830.1	827.28
30	805.85	804.74	798.48	801.06	797.67	799.78	801.3	789.29
31	748.49	741.87	731.34	739.68	735.69	729.14	725.85	712.28
32	659.72	652.79	639.78	643.37	642.78	631.08	627.42	609.33
33	541.46	537.38	523.84	528.87	525.14	516.8	515.3	498.6
34	403.46	406.04	395.06	397	400.13	390.24	392.27	377.07
35	267.7	265.26	266.37	265.73	266.81	260.17	265.38	250.44
36	155.73	152.44	151.76	148.53	144.61	138.45	142.05	131.88
37	80.12	79.86	78.51	76.41	74.45	73.97	75.43	72.74
38	67.49	68.09	67.8	68.09	67.66	67.8	68.25	68.05
39	63.17	63.44	63.27	63.71	63.02	63.3	63.29	63.33
40	53.29	54.25	53.36	54.32	53.08	52.62	52.67	51.35
41	38.54	39.16	38.25	39.11	38.15	37.73	37.07	36.18
42	32.15	32.42	32.13	32.28	32.12	32.06	31.63	31.21



INTENSITY TABLE (cd)

	240	245	250	255	260	265	270	275
0	848.27	848.27	848.27	848.27	848.27	848.27	848.27	848.27
1	848.78	846.43	846.24	845.57	850.8	848.18	852.94	849.02
2	853.9	849.39	853.35	853.74	852.8	852.08	856.14	854.1
3	851.62	851.28	854.23	850.72	851.42	851.19	851.46	851.66
4	850.66	849.81	854.48	855.61	850.94	851.29	852.71	854.12
5	851.42	854.15	851.9	850.07	850.77	854.62	855.09	855.7
6	848.36	852.11	854.49	849.62	851.37	854.54	854.72	854.19
7	846.46	847.76	852.09	852.65	850.01	855.3	854.55	853.09
8	846.39	847.31	848.86	853.68	848.63	853.02	853.46	854.3
9	846.18	851.79	850.05	850.14	848.95	849.95	853.19	851.8
10	847.43	852.37	849.39	852.39	848.91	848.99	851.7	850.88
11	847.26	849.15	848.38	854.18	849.88	849.96	854.36	854.34
12	847.28	848.13	849.88	853.25	850.14	849.59	851	852.12
13	847.69	850.8	853.7	854.81	851.39	851.88	852.3	851.63
14	847.11	848.62	850.07	854.12	852.38	853.37	851.12	850.9
15	845.76	847.12	852.32	852.3	854.1	850.17	851.34	848.29
16	845.13	848.56	853.68	853.56	850.34	850.87	850.9	849.31
17	843.04	847.4	849.62	850.75	851.09	852.84	849.51	848.11
18	845.62	848.99	851.24	850.6	848.9	849.23	847.13	844.6
19	847.17	850.4	848.06	852.39	850.78	850.7	845.56	844.48
20	843.64	847.34	849.29	848.33	850.67	850.13	844.02	843.4
21	845.74	844.86	846.58	849.8	847.92	847.15	846.17	847.34
22	848.08	844.02	846.41	846.02	844.46	849.87	847.23	845.04
23	844.45	844.97	847.58	847.3	844.72	847.65	847.86	845.17
24	844.31	842.52	844.37	847.28	845.08	847.15	842.11	840.02
25	845.38	847.29	845.49	845.71	845.91	848.84	840.54	841.28
26	842.38	845.5	845.46	846.86	847.91	845.7	839.57	836.85
27	844.08	843.38	843.52	844.82	844.22	842.98	838.73	836.56
28	837.1	842.18	840.75	843.04	839.71	841.58	838.42	836.8
29	830.33	833.04	834.59	837.92	830.89	828.92	827.6	824.02
30	793.83	792.1	795.29	795.53	784.24	787.69	775.88	772.95
31	722.26	714.47	720.98	714.01	707.9	707.53	703.96	698.72
32	622.2	615.7	622.72	616.19	611.42	605.7	601.52	600.98
33	514.2	503.59	506.22	496.95	496.91	490.63	481.81	484.92
34	392.5	380.06	385.89	370.47	376.44	366.21	358.01	355.78
35	263.23	249.53	254.35	239.01	251.03	240.66	233.15	227.63
36	137.82	127.5	132.26	121.14	134.73	130.61	125.2	123.61
37	74.18	72.69	72.73	73.34	74.81	75.13	75.9	76.56
38	68.04	67.92	68.32	68.88	70.1	70.65	71.23	72.48
39	63.24	62.93	63.55	63.42	64.42	64.95	64.95	65.56
40	50.92	50.25	51.15	50.43	50.92	51.09	50.27	50.56
41	35.83	35.16	35.67	34.52	34.94	35.18	34.75	34.71
42	31.03	30.69	30.54	30.34	30.26	30.5	30.56	30.37



INTENSITY TABLE (cd)

	280	285	290	295	300	305	310	315
0	848.27	848.27	848.27	848.27	848.27	848.27	848.27	848.27
1	852.01	850.7	852.63	853.04	852.54	852.19	852.79	852.13
2	855.56	854.98	855.94	860.41	857.07	857.52	856.21	856.85
3	855.97	855.76	854	858.59	859.61	855.57	855.94	855.07
4	858.58	858.4	853.89	855.11	856	855.44	856.84	852.3
5	856.22	855.64	853.72	854.48	856.37	850.65	854.15	850.34
6	854.05	853.23	853.94	852.22	854.98	851.53	850.99	848.43
7	850.78	853.81	850.94	849.28	849.96	851.99	846.74	848.61
8	847.92	850.36	850.89	847.2	846.06	850.6	845.06	844.42
9	847.48	852.84	851.54	848.07	845.06	847.19	844.67	843.01
10	849.3	849.9	850.09	849.16	843.89	846.07	843.3	843.61
11	847.2	851.29	847.02	848.06	845.6	844.4	844.92	841.07
12	847.65	850.63	844.57	844.04	848.53	842.75	842.69	841.06
13	847.71	849.56	843.88	843.9	847.15	843.13	845.57	840.55
14	844.73	849.5	842.37	842.57	843.5	842.75	842.26	840.76
15	844.71	847.03	842.55	841.74	841.66	846.12	839.84	839.63
16	843.14	843.55	840.65	840.9	842.33	842.33	840.66	838.98
17	843.67	841.13	841.38	839.43	845.36	844.74	839.94	838.41
18	845.23	842.13	843.32	839.44	841.98	838.55	839.87	839.37
19	845.07	841.14	844.28	839.5	838.76	841.35	838.03	837.12
20	843.15	840.24	841.91	837.64	839.32	837.93	836.84	839.6
21	843.82	840.16	839.42	839.16	840.83	837.35	841.47	837.73
22	841.86	839.58	839.42	837.95	837.45	837.29	837.82	836.93
23	841.64	840.47	839.52	842	838.8	840.93	838.07	837.88
24	839.24	838.03	836.39	839.54	837.75	841.67	839.5	841.06
25	836.93	836.45	838.13	838.33	840.92	842.42	842.51	847.31
26	838.06	836.37	841.06	841.42	845.82	844.11	845.49	852.25
27	839.64	835.72	840.32	841.34	846.11	847.41	848.62	850.55
28	835.46	836.13	838.93	841.93	844.37	848.76	849.28	851.3
29	821.02	823.59	829.42	834.3	834.13	837.8	840.23	843.67
30	775.76	774.71	779.36	785.74	787.54	794.52	793.62	802.3
31	700.25	705.07	709.39	710.12	714.58	716.59	714.83	721.46
32	597.55	606.25	607.72	611.45	610.94	617.54	614.93	616.33
33	480.35	485.57	487.44	492.77	486.36	495.76	498.72	494.85
34	352.54	355.18	359.63	359.82	355.38	363.2	367.75	364.74
35	230.52	229.88	230.62	233.12	225.09	233.37	231.85	226.01
36	129.78	125.07	121.93	122.07	111.38	116.23	114.57	111.7
37	78.46	78.41	78.42	78.07	77.85	78.19	78.56	79.05
38	74.13	74.19	74.95	74.9	74.8	75.18	75.27	75.42
39	67.99	67.66	68.18	68.63	68	68.83	68.33	68.54
40	51.99	51.61	50.83	51.36	49.49	50.89	49.33	50.32
41	35.73	35.54	34.99	35.38	34.44	34.68	34.51	34.73
42	30.94	30.96	31.06	31.26	31.42	31.44	31.76	31.85



INTENSITY TABLE (cd)

	320	325	330	335	340	345	350	355
0	848.27	848.27	848.27	848.27	848.27	848.27	848.27	848.27
1	855.75	853.06	852.79	858.27	854.52	855.97	853.49	856.52
2	857.78	857.84	856.7	859.05	861.31	858.47	857.44	862.57
3	855.23	857.94	855.5	859.42	857.36	858.29	856.64	858.88
4	852.23	853.86	853.5	855.51	854.16	852.35	850.08	849.93
5	850.51	852.3	853.32	850.67	849.52	853.15	848.53	849.14
6	852.12	851.92	851.6	851.14	846.2	848.13	846.56	849.78
7	846.57	848.68	847.99	848.12	845.43	846.82	843.55	846.97
8	842.44	844.38	843.29	842.68	845.94	844.06	841.36	840.72
9	842.62	840.48	842.68	838.99	840.72	839.6	837.49	841.2
10	845.58	839.82	839.65	839.74	842.03	840.27	836.56	837.35
11	845.76	839.71	842.23	837.24	840.74	837.26	834.36	834.19
12	843.41	840.49	840.1	838.91	839.55	835.16	833.71	833.61
13	841.68	842.03	842.55	841.38	840.33	835.72	832.98	832.02
14	839.03	843.63	840.65	840.42	837.47	836.32	833.46	831.5
15	839.99	841.51	839.36	838.07	838.2	836.68	833.19	832.26
16	840.06	842.63	842.18	837.29	840.95	838.01	835.58	833.04
17	840.99	839.18	839.58	839.52	836.61	836.25	837.93	833.47
18	842.46	840.53	838.17	838.34	836.52	839.29	834.4	833.68
19	839.03	841.76	841.37	837.88	839.44	838.24	839.49	834.46
20	839.37	839.08	840.48	839.76	841.52	837.4	839.21	839.12
21	839.41	842.2	844.8	839.21	844.36	839.14	841.39	843.23
22	837.29	843.67	843.5	841.16	843.47	842.52	840.2	844.42
23	839.61	842.64	842.28	844.02	844.65	848.38	843.87	844.57
24	845.02	843.61	845.81	847.97	847.15	849.44	847.29	845.18
25	849.48	847.09	852.43	852.83	851.75	854.27	854.42	847.64
26	850.52	851.08	855.54	853.21	854	853.85	854.25	854.02
27	854.34	855.56	857.26	857.4	856.87	855.91	854.23	855.2
28	854.78	855.74	857.05	855.61	857	856.27	855.46	857.05
29	843.21	843.24	849.21	846.93	848.82	849.99	847.88	849.02
30	800.25	799.01	805.55	809.02	811.77	809.46	813.29	807.59
31	722.29	717.71	725.12	730.67	736.66	735.51	743.82	731.87
32	616.75	614.96	616.83	628.22	632.3	634.38	643.68	633.81
33	498.78	495.41	500.62	509.01	510.82	513.96	518.99	508.97
34	364.51	367.8	372.91	379.93	378.94	376.09	375.91	369.57
35	220.93	227.7	232.24	234.98	233.28	232.29	237.83	234.64
36	105.93	109.37	113.1	114.2	110.34	113.57	119.09	117.04
37	79.27	79.4	79.01	78.87	77.88	77.98	78.13	78.73
38	75.9	75.36	75.26	75.28	74.59	75.09	74.89	75.8
39	67.63	67.89	67.63	68.12	67.2	68.51	68.77	68.64
40	49.47	49.88	49.66	50.14	48.84	51.2	51.51	51.88
41	34.94	34.66	35	35.06	34.79	35.15	36.22	35.76
42	32	32.2	32.19	32.36	32.24	32.72	33.04	33.21



INTENSITY TABLE (cd)

	0	5	10	15	20	25	30	35
43	32.36	32.89	33.04	33.14	33.48	33.58	33.57	33.22
44	30.75	30.91	30.86	31.09	31.27	31.66	31.66	31.84
45	27.02	27.38	27.56	27.6	28.04	28.05	27.9	27.76
46	26.45	26.84	27.18	27.07	27.16	27.19	26.84	26.68
47	30.67	30.62	31.38	30.91	30.74	30.69	29.92	30.08
48	36.69	36.04	36.26	36.26	36.39	36.27	35.61	35.92
49	41.85	40.55	40.73	40.52	40.58	41.44	41.24	41.81
50	46.71	45.8	45.8	45.96	45.98	46.7	46.43	46.76
51	50.3	49.9	50.23	50.22	50.21	50.53	50.33	50.36
52	52.07	52.44	52.74	52.52	52.57	52.32	52.08	51.31
53	49.76	50.28	50.09	50.24	50.51	50.27	50.23	49.45
54	45.43	45.04	44.47	44.85	45.05	45.77	46.4	46.18
55	39.52	39.16	38.36	38.6	38.96	39.76	40.41	40.81
56	31.84	32.18	31.71	31.98	32.07	32.91	33.52	33.85
57	24.74	24.87	24.93	25.14	25.34	25.87	26.01	25.7
58	22.42	22.74	23.24	23.17	23.47	23.54	23.46	23.31
59	21.9	22.39	23.21	23.07	23.51	23.52	23.63	23.72
60	21.82	22.31	23.26	23.02	23.29	23.55	23.7	23.58
61	21.66	22.12	23	22.63	22.97	23.07	23.19	23.06
62	20.69	21.15	22.18	21.49	22.04	22.12	22.12	21.98
63	19.34	19.66	20.56	20.1	20.51	20.6	20.73	20.66
64	18.28	18.68	19.68	19.04	19.49	19.76	19.97	19.78
65	17.49	17.76	18.83	18.28	18.54	18.75	18.89	18.81
66	16.8	16.98	18.06	17.56	17.64	17.85	17.77	17.75
67	15.47	15.65	16.83	16.24	16.34	16.38	16.34	16.25
68	14.08	14.08	15.22	14.67	14.77	14.82	14.89	14.9
69	12.21	12.32	13.17	12.78	12.97	12.91	13.1	13.05
70	11.34	11.35	11.99	11.65	11.83	11.92	11.9	11.66
71	10.58	10.58	11.1	10.88	10.95	11.09	11.04	10.86
72	9.93	9.94	10.35	10.14	10.27	10.28	10.19	10.08
73	9.32	9.3	9.54	9.46	9.75	9.65	9.44	9.45
74	8.54	8.43	8.59	8.58	8.82	8.67	8.51	8.6
75	8.14	7.89	7.93	7.94	8.11	7.87	7.76	7.88
76	7.35	7.17	7.12	7.1	7.24	7.06	6.9	7.02
77	6.65	6.48	6.38	6.29	6.47	6.26	6.12	6.13
78	5.75	5.61	5.5	5.32	5.46	5.41	5.26	5.19
79	4.76	4.71	4.56	4.39	4.6	4.63	4.49	4.3
80	4.11	4.04	3.9	3.75	3.9	3.98	3.83	3.54
81	3.5	3.36	3.32	3.15	3.32	3.39	3.26	2.94
82	3	2.87	2.76	2.71	2.86	2.85	2.79	2.47
83	2.54	2.44	2.35	2.34	2.45	2.42	2.43	2.1
84	2.24	2.14	2.04	2.06	2.14	2.16	2.16	1.85
85	1.96	1.84	1.8	1.82	1.87	1.93	1.93	1.59



INTENSITY TABLE (cd)

	40	45	50	55	60	65	70	75
43	32.95	32.91	33.09	33.35	33.37	33.45	33.44	33.34
44	31.71	31.61	31.87	32.13	32.13	32.55	32.61	32.15
45	27.68	27.51	27.82	27.57	27.42	27.74	27.74	27.83
46	26.49	26.34	26.41	26.05	25.81	25.95	25.98	26.07
47	29.12	29.37	28.74	28.27	28.02	27.82	27.87	28.37
48	34.89	35.33	34.88	34.41	34.82	34.4	34.88	35.19
49	41.54	42.53	42.43	42.39	42.4	42.34	42.34	42.45
50	46.68	47.26	47.53	47.61	47.9	47.74	48.02	47.82
51	49.74	49.6	49.58	48.99	49.33	49.55	49.95	49.91
52	50.39	49.17	48.41	47.68	47.78	48.2	48.58	49.06
53	48.78	47.99	47.38	46.86	46.64	46.96	47.56	48.05
54	46.5	45.94	45.98	45.7	45.66	46.1	46.22	46.46
55	41.32	41.52	42.57	42.81	43.06	43.82	44.18	44.41
56	34.2	34.27	35.91	36.35	36.69	38.32	38.9	39.29
57	26.13	26.11	27.32	27.73	27.95	29.17	29.97	30.79
58	23.38	23.87	24.42	24.76	25.18	25.63	26.26	26.7
59	23.68	24.14	24.73	25.03	25.35	25.88	26.38	26.84
60	23.76	23.99	24.67	24.97	25.31	25.68	26.31	26.58
61	23.22	23.38	24.07	24.24	24.43	24.84	25.33	25.85
62	22.28	22.49	23.12	23.39	23.36	23.96	24.14	24.86
63	20.87	21.3	21.83	22.1	22.15	22.72	22.76	23.61
64	19.83	20.03	20.7	20.61	20.79	21.3	21.34	22.09
65	18.75	19.03	19.47	19.52	19.58	20.17	20.19	20.68
66	17.52	17.78	18.19	18.07	18.05	18.63	18.5	19.17
67	15.98	16.15	16.72	16.48	16.54	16.97	16.86	17.33
68	14.42	14.72	15.31	14.95	15.07	15.56	15.48	15.8
69	12.77	13.04	13.62	13.43	13.4	13.92	13.87	14.24
70	11.51	11.9	12.26	12.19	12.26	12.51	12.53	12.85
71	10.67	11.03	11.24	11.4	11.38	11.6	11.56	11.92
72	9.9	10.22	10.39	10.55	10.5	10.72	10.67	11.04
73	9.24	9.59	9.68	9.86	9.81	10.03	10.05	10.31
74	8.45	8.7	8.83	9.03	9.01	9.2	9.17	9.46
75	7.8	7.97	8.08	8.33	8.27	8.36	8.27	8.52
76	7.01	7.12	7.2	7.48	7.47	7.54	7.4	7.68
77	6.2	6.16	6.26	6.49	6.38	6.5	6.4	6.65
78	5.29	5.27	5.36	5.65	5.47	5.56	5.5	5.73
79	4.52	4.44	4.61	4.69	4.64	4.66	4.62	4.81
80	3.79	3.75	3.97	4.01	4.03	4.05	3.96	4.1
81	3.12	3.1	3.26	3.33	3.32	3.39	3.31	3.43
82	2.66	2.58	2.72	2.76	2.76	2.83	2.77	2.86
83	2.3	2.21	2.36	2.38	2.41	2.48	2.43	2.49
84	2.01	1.92	2.07	2.1	2.09	2.17	2.17	2.21
85	1.76	1.66	1.74	1.81	1.78	1.88	1.84	1.9



INTENSITY TABLE (cd)

	80	85	90	95	100	105	110	115
43	32.79	32.45	31.59	31.17	30.36	30.32	29.38	28.98
44	31.71	31.06	30.18	29.19	28.42	28.49	27.52	27.46
45	27.69	27.63	27.17	26.76	26.09	26.38	25.46	25.07
46	26.14	26.03	25.66	25.12	24.89	24.96	24.05	23.75
47	28.42	27.98	27.82	27.42	27.54	27.46	27.45	26.63
48	34.8	34.25	34.03	33.82	33.84	34.08	33.97	33.45
49	41.62	40.81	40.06	39.36	39.13	39.13	39.08	38.7
50	47.19	46.77	45.7	45.27	44.52	44.87	44.31	44.01
51	49.82	49.6	48.84	48.63	49.03	48.85	48.12	47.3
52	49.82	49.97	49.65	49.95	50.08	50.08	49.66	49.02
53	48.78	49.36	49.05	49.78	49.99	50.13	49.53	48.82
54	46.36	46.56	46.71	47.3	47.55	47.71	47.23	46.25
55	44.22	43.89	43.8	44.18	43.84	44.37	43.5	43.12
56	39.76	39.75	39.84	40.15	39.6	40.01	38.41	37.89
57	30.97	31.92	32.52	33.33	32.99	33.29	31.28	30.81
58	27.46	27.81	28.15	28.6	28.17	27.86	26.14	25.38
59	27.44	27.59	27.89	27.94	27.33	26.98	25.12	24.22
60	27.05	27.07	27.43	27.38	26.71	26.54	24.69	23.55
61	26.2	26.3	26.55	26.55	25.98	25.81	24.15	22.89
62	25.13	25.26	25.5	25.41	24.95	24.88	23.28	21.96
63	23.78	23.95	23.94	23.93	23.58	23.67	21.86	20.52
64	22.3	22.54	22.45	22.41	22.11	22.06	20.31	18.86
65	20.81	21.05	20.77	20.63	20.42	20.3	18.64	17.24
66	18.95	19.26	19.1	19.07	18.84	18.58	17.04	15.82
67	17.34	17.6	17.49	17.65	17.22	17.07	15.71	14.58
68	15.87	16.05	16.06	16.21	15.75	15.53	14.37	13.39
69	14.29	14.48	14.42	14.57	14.13	14.05	12.88	12.03
70	12.84	12.96	12.94	13.07	12.59	12.42	11.55	10.56
71	11.94	11.95	11.93	12	11.53	11.37	10.64	9.7
72	11.03	11.09	10.95	11.13	10.63	10.54	9.84	9.01
73	10.27	10.36	10.18	10.35	9.84	9.69	9.13	8.38
74	9.4	9.37	9.3	9.46	8.96	8.76	8.37	7.71
75	8.5	8.49	8.45	8.48	8.08	7.85	7.48	6.93
76	7.65	7.69	7.63	7.61	7.29	7.02	6.74	6.19
77	6.57	6.66	6.66	6.58	6.33	6.1	5.79	5.36
78	5.68	5.68	5.67	5.55	5.36	5.19	4.88	4.53
79	4.79	4.73	4.74	4.54	4.38	4.32	4	3.72
80	4.18	4.04	4.04	3.8	3.68	3.66	3.35	3.07
81	3.51	3.46	3.38	3.15	3.02	3.03	2.78	2.51
82	2.97	2.9	2.76	2.58	2.47	2.5	2.31	2.08
83	2.59	2.49	2.37	2.21	2.07	2.05	1.93	1.71
84	2.27	2.21	2.12	1.94	1.81	1.73	1.67	1.46
85	1.9	1.9	1.81	1.65	1.54	1.45	1.4	1.23



INTENSITY TABLE (cd)

	120	125	130	135	140	145	150	155
43	28.66	28.9	29.13	29.21	29.45	29.6	29.89	30.4
44	27.24	27.52	28.15	28.34	28.56	28.67	28.66	28.96
45	24.75	24.58	24.95	24.77	24.72	24.93	24.95	24.98
46	23.29	23.09	23.36	23.32	23.18	23.14	23.09	23.41
47	25.56	25.21	24.77	24.66	24.51	24.09	24.55	24.89
48	32.47	32.06	31.68	31.82	31.39	31.16	31.67	31.2
49	38.51	38.43	38.92	39.31	39.48	39.24	39.59	39.34
50	43.6	43.61	44.09	44.57	44.9	44.95	45.02	44.81
51	46.45	46.16	46.14	46.33	46.68	46.6	46.65	46.7
52	47.84	47.22	46.79	46.53	46.1	46.04	45.98	46.48
53	47.8	47.08	46.76	46.3	45.87	45.82	45.78	46.17
54	45.36	45.25	45.5	45.63	45.38	45.05	45.06	45.1
55	42.57	42.44	42.71	43.36	43.38	43.18	43.35	43.02
56	37.15	37.29	37.93	38.61	38.05	37.73	37.89	37.51
57	29.82	30.08	30.36	30.47	30.06	29.15	29.07	29
58	24.59	24.56	24.49	24.11	23.73	23.12	22.96	23.03
59	23.36	23.35	22.99	22.74	22.46	22.23	22	22.11
60	22.87	23.03	22.66	22.42	22.26	22.09	21.85	22.07
61	22.29	22.53	22.24	22.01	21.69	21.52	21.44	21.6
62	21.48	21.57	21.26	21.21	20.81	20.66	20.64	20.66
63	20.13	20.03	19.66	19.61	19.21	19.08	18.9	18.83
64	18.34	18.2	17.94	17.84	17.46	17.43	17.24	17.27
65	16.78	16.56	16.34	16.44	16.02	16.02	15.83	15.88
66	15.34	15.29	15.1	15.05	14.7	14.76	14.63	14.64
67	14.01	14.15	13.89	13.77	13.54	13.53	13.33	13.39
68	12.85	12.88	12.75	12.57	12.33	12.3	12.27	12.25
69	11.52	11.62	11.56	11.39	11.16	11.18	11.08	11.11
70	10.19	10.24	10.07	9.91	9.75	9.87	9.74	9.79
71	9.29	9.29	9.28	9.12	8.98	9.09	9.07	9.06
72	8.59	8.52	8.59	8.39	8.34	8.49	8.37	8.37
73	8.03	7.91	7.98	7.83	7.76	8.01	7.86	7.76
74	7.39	7.34	7.46	7.29	7.2	7.5	7.31	7.18
75	6.64	6.57	6.7	6.62	6.49	6.86	6.53	6.49
76	5.96	5.88	6.04	6	5.83	6.16	5.93	5.86
77	5.14	5.12	5.33	5.24	5.09	5.35	5.14	5.09
78	4.29	4.31	4.5	4.44	4.31	4.51	4.36	4.31
79	3.46	3.51	3.69	3.63	3.48	3.64	3.5	3.52
80	2.84	2.91	3.03	3	2.9	2.99	2.89	2.93
81	2.31	2.36	2.48	2.46	2.39	2.41	2.37	2.39
82	1.88	1.94	2.03	2.05	2	1.97	1.97	1.96
83	1.54	1.61	1.66	1.72	1.7	1.62	1.65	1.6
84	1.29	1.34	1.39	1.47	1.46	1.39	1.41	1.37
85	1.04	1.08	1.16	1.25	1.24	1.17	1.19	1.13



INTENSITY TABLE (cd)

	160	165	170	175	180	185	190	195
43	30.86	31.09	31.02	30.55	29.89	29.99	29.93	30.05
44	29.32	29.63	29.32	28.91	28.4	28.48	28.6	28.57
45	25.58	25.82	25.52	25.32	23.98	24.1	24.32	24.33
46	23.55	23.58	22.85	22.6	22.23	22.43	22.92	22.7
47	25.01	24.99	24.22	23.79	25.52	25.7	26.74	26.56
48	31.25	30.9	29.77	29.88	32.08	32.54	33.33	33.28
49	38.99	38.26	36.97	36.42	37.54	37.49	37.91	37.78
50	44.49	43.69	41.88	41.71	43.04	43.4	43.51	43.63
51	46.76	46.4	45.52	45.98	47.28	47.94	48.6	48.45
52	46.75	46.97	47.02	47.65	49.9	50.86	51.32	51.3
53	46.39	46.39	46.88	47.51	48.86	49.93	50.35	50.52
54	45.37	45.03	45.21	44.85	45.45	45.67	45.52	46.21
55	43.01	42.23	41.6	40.89	40.14	39.9	39.4	39.42
56	37.18	36.26	36.45	35.45	34.1	34.06	33.53	33.7
57	28.38	28.41	28.9	28.66	27.03	27.38	27.23	27.31
58	23.13	23.04	23.32	23.33	22.92	22.79	22.73	22.68
59	22.35	22.32	22.44	22.45	22.62	22.34	22.43	22.33
60	22.1	22.24	22.35	22.42	22.57	22.34	22.26	22.43
61	21.71	21.81	22.04	21.9	21.62	21.21	21.26	21.39
62	20.53	20.58	20.51	20.5	20.08	19.72	19.73	20.09
63	18.79	18.87	18.88	18.88	18.44	18.26	18.26	18.62
64	17.16	17.18	17.26	17.15	16.77	16.61	16.76	17.13
65	15.71	15.8	15.75	15.65	15.39	15.33	15.48	15.69
66	14.52	14.66	14.53	14.44	14.32	14.14	14.32	14.58
67	13.29	13.39	13.39	13.25	13.23	12.95	13.23	13.39
68	12.19	12.15	12.24	12.07	12.07	11.74	11.99	12.21
69	10.94	10.94	10.97	10.98	10.7	10.47	10.72	10.9
70	9.64	9.69	9.64	9.67	9.6	9.39	9.64	9.8
71	8.98	8.97	8.91	8.9	8.92	8.72	8.93	9.11
72	8.38	8.34	8.18	8.23	8.22	8.1	8.33	8.52
73	7.81	7.82	7.66	7.63	7.67	7.56	7.73	7.93
74	7.28	7.31	7.14	7.07	6.99	6.98	7.05	7.28
75	6.59	6.62	6.54	6.44	6.35	6.32	6.36	6.53
76	5.94	5.94	5.96	5.85	5.67	5.59	5.65	5.87
77	5.18	5.21	5.11	5.06	4.78	4.74	4.82	4.89
78	4.31	4.35	4.29	4.18	3.94	3.85	3.9	4.03
79	3.5	3.52	3.53	3.45	3.25	3.16	3.18	3.26
80	2.93	2.94	2.99	2.92	2.69	2.58	2.64	2.75
81	2.42	2.38	2.4	2.4	2.11	2.03	2.14	2.24
82	2.02	1.95	1.95	1.97	1.77	1.71	1.75	1.86
83	1.69	1.65	1.69	1.69	1.5	1.45	1.49	1.59
84	1.39	1.38	1.48	1.43	1.3	1.25	1.3	1.38
85	1.15	1.12	1.25	1.18	1.08	1.03	1.08	1.16



INTENSITY TABLE (cd)

	200	205	210	215	220	225	230	235
43	29.95	30.09	29.99	30.05	30.03	29.95	29.6	29.24
44	28.5	28.69	28.36	28.53	28.57	28.53	28.39	28.25
45	24.12	24.43	24.17	24.3	24.05	24.05	23.84	23.67
46	22.88	22.96	22.79	22.87	22.8	22.66	22.64	22.8
47	26.99	26.88	27.07	27.41	27.52	27.25	27.27	27.6
48	34.09	34.22	34.16	34.82	35.32	35.41	35.62	36.24
49	38.83	39.09	39.62	40.98	41.74	42.31	42.67	42.82
50	44.51	44.55	44.93	46.06	46.7	46.59	47.07	47.34
51	49.1	48.94	48.91	49.04	48.77	48.3	48.03	47.34
52	51.31	51.02	50.76	49.97	49.04	47.91	47.42	46.98
53	50.14	49.57	48.94	48.43	47.76	47.05	46.44	45.77
54	45.02	45.19	44.55	45.18	44.81	44.72	44.29	43.84
55	39.08	39.52	38.86	39.98	40.01	40.18	39.81	38.96
56	32.86	33.02	32.47	33.05	33	32.71	31.88	30.72
57	26.25	26.03	25.01	25.33	24.54	24.01	23.43	22.58
58	22.48	22.11	21.71	21.77	21.35	21.18	21	20.81
59	22.19	21.89	21.75	21.8	21.65	21.32	21.28	20.89
60	22.33	21.93	21.78	22.01	21.7	21.39	21.19	20.9
61	21.18	20.97	20.91	21.13	20.81	20.43	20.35	20.11
62	19.84	19.72	19.74	19.95	19.58	19.34	19.3	19.11
63	18.41	18.39	18.28	18.51	18.22	18.02	18.01	17.8
64	16.95	16.95	16.72	17.06	16.73	16.61	16.71	16.34
65	15.55	15.51	15.33	15.72	15.37	15.25	15.35	15.03
66	14.36	14.2	14.14	14.5	14.25	14.14	14.27	13.94
67	13.17	13.11	13.02	13.36	13.08	13.04	13.22	12.98
68	11.97	12.02	12.07	12.14	12.04	12.02	12.12	11.97
69	10.65	10.61	10.64	10.65	10.6	10.46	10.58	10.46
70	9.68	9.72	9.68	9.71	9.69	9.53	9.64	9.47
71	8.93	9	8.88	8.96	8.87	8.79	8.93	8.73
72	8.32	8.35	8.22	8.28	8.27	8.11	8.3	8.15
73	7.75	7.86	7.73	7.78	7.78	7.62	7.86	7.63
74	7.12	7.1	7.02	7.1	7.1	6.9	7.13	6.86
75	6.42	6.36	6.33	6.37	6.38	6.21	6.51	6.31
76	5.69	5.62	5.59	5.71	5.7	5.55	5.83	5.67
77	4.86	4.8	4.82	4.94	4.92	4.79	5.04	4.99
78	4.07	3.92	3.93	4.04	4.02	3.89	4.2	4.25
79	3.34	3.26	3.22	3.33	3.28	3.13	3.43	3.42
80	2.77	2.74	2.71	2.8	2.74	2.65	2.9	2.96
81	2.27	2.31	2.28	2.35	2.27	2.21	2.36	2.4
82	1.87	1.84	1.83	1.93	1.85	1.75	1.88	1.86
83	1.58	1.51	1.51	1.64	1.55	1.47	1.56	1.52
84	1.36	1.27	1.3	1.41	1.35	1.27	1.34	1.25
85	1.15	1.04	1.05	1.13	1.12	1.05	1.11	1.02



INTENSITY TABLE (cd)

	240	245	250	255	260	265	270	275
43	29.12	28.84	28.74	28.79	28.71	28.9	29.02	29.01
44	28.47	28.04	27.93	27.72	27.48	27.28	27.27	26.88
45	23.86	23.6	23.79	23.96	24.28	24.5	24.7	24.47
46	22.74	22.97	22.97	23.85	24.14	25	25.65	25.78
47	27.93	28.62	28.63	30.34	30.06	31.68	32.21	32.95
48	36.76	36.97	37	37.71	37.03	37.82	37.72	37.61
49	43.55	43.73	43.04	43.09	42.56	42.51	42.58	41.97
50	47.15	47	46.32	46.04	46.08	46.04	46.31	46.14
51	47.1	47.02	46.75	46.87	47.14	47.37	47.85	47.47
52	46.88	46.66	46.53	47.05	47.62	48.2	48.36	47.81
53	45.35	45.55	45.47	45.67	45.58	45.69	45.87	45.4
54	43.8	43.57	42.76	42.46	42.35	42.15	42.17	41.25
55	39.47	39.12	38.57	37.72	38.11	37.08	37.07	36.16
56	31.56	30.99	30.63	29.46	30.49	29.8	30.14	29.55
57	22.95	22.48	22.18	22.17	23.05	23.29	23.51	23.26
58	20.89	20.72	20.57	20.84	21.43	22.35	22.6	22.92
59	21.03	20.58	20.54	20.78	21.37	22.18	22.51	22.87
60	21.01	20.75	20.45	20.57	21.15	21.97	22.25	22.63
61	20.16	19.96	19.7	19.85	20.39	21.26	21.5	21.91
62	19.01	19.05	18.76	18.85	19.45	20.22	20.38	20.87
63	17.72	17.6	17.36	17.51	18.1	18.68	19.05	19.51
64	16.34	16.15	15.92	16.1	16.65	17.21	17.39	18.02
65	15.14	14.84	14.67	14.86	15.39	15.88	16.17	16.77
66	14.23	13.87	13.63	13.94	14.33	14.78	15.03	15.6
67	13.02	12.79	12.72	12.99	13.47	13.83	14.07	14.58
68	11.94	11.74	11.54	11.77	12.21	12.56	12.88	13.23
69	10.32	10.16	10	10.27	10.65	10.94	11	11.44
70	9.47	9.24	9.09	9.33	9.69	9.97	10.16	10.47
71	8.73	8.59	8.34	8.66	8.92	9.24	9.49	9.74
72	8.09	7.94	7.75	8.02	8.37	8.61	8.8	9.01
73	7.62	7.48	7.31	7.54	7.94	8.07	8.18	8.47
74	6.85	6.85	6.69	6.84	7.22	7.36	7.46	7.72
75	6.28	6.3	6.24	6.25	6.63	6.77	6.86	7.02
76	5.65	5.61	5.53	5.54	5.95	6.05	6.2	6.29
77	4.93	4.91	4.89	4.81	5.16	5.28	5.4	5.48
78	4.17	4.11	4.1	4.05	4.4	4.52	4.66	4.7
79	3.36	3.3	3.3	3.3	3.59	3.7	3.78	3.85
80	2.88	2.83	2.75	2.8	2.96	3.06	3.14	3.21
81	2.31	2.24	2.14	2.24	2.33	2.45	2.51	2.53
82	1.79	1.81	1.69	1.81	1.87	2.01	2.04	1.99
83	1.46	1.48	1.36	1.47	1.52	1.64	1.69	1.59
84	1.24	1.25	1.14	1.22	1.27	1.37	1.45	1.32
85	1.04	1.07	0.94	1.01	1.04	1.12	1.22	1.08



INTENSITY TABLE (cd)

	280	285	290	295	300	305	310	315
43	29.36	29.28	29.32	29.54	29.74	29.72	30.39	30.5
44	27.13	26.88	27.13	27.55	27.87	28.23	28.91	29.42
45	24.7	24.3	24.31	24.45	24.56	24.48	24.64	24.68
46	25.5	25.61	25.25	25.24	25.56	25.01	24.86	24.61
47	32.29	32.54	32.4	32.17	32.69	31.17	31.11	30.67
48	37.18	37.1	37.28	37.51	38.27	37.75	38.26	38.14
49	41.24	41.21	41.63	42.12	43.18	42.7	43.42	43.45
50	45.81	46.03	46.26	46.61	46.69	46.47	46.51	46.64
51	47.55	47.79	47.94	48.34	48.59	48.03	47.61	47.42
52	47.67	47.87	47.91	48.44	48.16	47.8	47.18	46.98
53	45.1	44.73	44.77	44.77	44.54	44.47	44.82	44.94
54	40.52	40.09	40.25	40.79	40.64	41.12	41.46	41.98
55	35.36	34.79	35.31	35.47	35.25	35.67	36.22	36.56
56	28.82	27.63	28.2	27.69	27.22	27.32	27.46	27.38
57	22.79	22.08	22.1	22.26	22.08	22.17	22.5	22.34
58	22.47	22.07	21.9	21.94	21.72	21.77	21.86	21.83
59	22.39	22.27	22.21	22.37	22	22.12	22.1	21.92
60	22.38	22.14	22.07	22.19	21.72	21.98	21.98	21.94
61	21.61	21.41	21.36	21.49	21.15	21.53	21.45	21.42
62	20.46	20.4	20.31	20.62	20.11	20.45	20.43	20.28
63	18.87	18.96	18.95	19.04	18.5	18.85	18.9	18.86
64	17.37	17.62	17.77	17.67	17.27	17.72	17.75	17.64
65	16.3	16.59	16.78	16.63	16.35	16.87	16.79	16.75
66	15.17	15.39	15.84	15.66	15.46	16.13	15.94	16
67	14.21	14.41	14.84	14.65	14.54	15.27	15.11	15.02
68	12.91	13.03	13.5	13.22	13.07	13.99	13.63	13.59
69	11.25	11.31	11.91	11.49	11.43	12.65	12.03	11.89
70	10.31	10.48	10.94	10.6	10.62	11.47	11.03	10.95
71	9.65	9.78	10.11	9.96	9.91	10.36	10.36	10.34
72	8.9	9.07	9.26	9.22	9.24	9.38	9.72	9.71
73	8.36	8.52	8.57	8.47	8.6	8.63	9.11	9.1
74	7.67	7.83	7.84	7.66	7.8	7.85	8.35	8.27
75	7.07	7.3	7.27	7.09	7.29	7.28	7.82	7.64
76	6.37	6.54	6.56	6.35	6.52	6.44	7.05	6.87
77	5.49	5.62	5.65	5.44	5.6	5.54	6.14	6.03
78	4.82	4.95	4.96	4.72	4.91	4.83	5.3	5.29
79	3.94	4.1	4.23	3.94	4.09	4.12	4.44	4.46
80	3.27	3.43	3.63	3.34	3.47	3.59	3.8	3.84
81	2.59	2.76	2.91	2.66	2.7	2.85	3.1	3.15
82	2.08	2.19	2.32	2.15	2.11	2.3	2.5	2.5
83	1.72	1.8	1.95	1.83	1.82	1.98	2.19	2.14
84	1.47	1.55	1.68	1.6	1.62	1.77	1.97	1.87
85	1.24	1.27	1.42	1.33	1.39	1.47	1.68	1.57



INTENSITY TABLE (cd)

	320	325	330	335	340	345	350	355
43	30.79	30.75	30.93	30.63	30.7	31.15	31.33	31.68
44	29.22	29.36	29.08	28.94	28.83	29.03	29.35	29.08
45	24.96	25.04	24.92	24.76	24.83	25.29	25.86	26.01
46	24.92	24.72	24.52	24.49	24.63	25.39	25.99	26.36
47	31	29.92	29.61	29.43	29.72	30.26	30.51	31.1
48	38.37	37.52	36.83	36.5	36.79	36.68	36.43	36.18
49	44.03	43.87	43.7	43.47	43.96	42.93	42.48	41.94
50	46.66	46.54	46.64	46.14	46.58	46.36	46.69	46.12
51	46.79	46.55	46.36	46.67	47.23	48.12	48.73	49.47
52	46.2	45.97	45.85	45.94	46.57	47.85	49.1	50.17
53	44.86	44.96	44.83	45.41	45.72	46.71	47.39	47.58
54	42.13	42.83	42.75	43.23	43.23	43.63	43.9	43.59
55	36.24	36.85	36.14	36.75	36.64	37.18	37.55	37.21
56	26.47	27.32	26.8	27.54	27.47	27.95	28.62	28.89
57	22.26	22.38	21.92	21.83	22.22	22.25	22.56	23.04
58	21.75	21.61	21.23	21.13	21.1	20.9	21.36	21.73
59	21.75	21.61	21.21	20.94	21.04	20.7	21.14	21.3
60	21.76	21.66	21.31	20.95	21.09	20.77	21.14	21.3
61	21.22	21.14	20.92	20.61	20.91	20.51	20.94	20.9
62	20.1	19.91	19.57	19.46	19.66	19.42	19.94	19.72
63	18.69	18.42	18.2	18.13	18.4	17.98	18.59	18.54
64	17.49	17.31	17.18	17.04	17.37	16.98	17.67	17.66
65	16.52	16.4	16.35	16.19	16.53	16.09	16.65	16.77
66	15.83	15.71	15.68	15.36	15.82	15.24	15.89	16
67	14.77	14.7	14.44	14.32	14.62	14.08	14.55	14.65
68	13.22	13.07	12.98	12.9	13.08	12.44	12.98	13.19
69	11.69	11.56	11.62	11.47	11.69	11.11	11.71	11.79
70	10.78	10.75	10.96	10.74	10.82	10.45	11.02	11.03
71	10.11	10.25	10.34	9.91	10.25	9.94	10.38	10.38
72	9.43	9.56	9.59	9.32	9.72	9.39	9.67	9.8
73	8.9	9.01	8.96	8.69	9.08	8.72	8.96	9.1
74	8.08	8.19	8.16	7.94	8.27	7.93	8.15	8.29
75	7.49	7.57	7.54	7.39	7.64	7.31	7.5	7.79
76	6.72	6.84	6.79	6.68	6.89	6.61	6.77	7.01
77	5.93	6.04	6.05	5.97	6.14	5.89	6.01	6.26
78	5.15	5.22	5.22	5.14	5.23	4.99	5.04	5.29
79	4.29	4.32	4.43	4.34	4.36	4.14	4.21	4.42
80	3.7	3.73	3.79	3.76	3.78	3.53	3.56	3.82
81	3.02	3.09	3.11	3.14	3.18	2.97	3	3.19
82	2.41	2.46	2.41	2.55	2.61	2.42	2.52	2.63
83	2.09	2.09	2.02	2.19	2.2	2.06	2.21	2.26
84	1.86	1.81	1.78	1.93	1.92	1.8	1.97	1.97
85	1.6	1.52	1.49	1.66	1.59	1.53	1.7	1.71



INTENSITY TABLE (cd)

	0	5	10	15	20	25	30	35
86	1.67	1.55	1.56	1.58	1.62	1.64	1.7	1.38
87	1.41	1.28	1.35	1.34	1.38	1.36	1.45	1.16
88	1.3	1.33	1.35	1.28	1.2	1.13	1.23	0.99
89	4.66	5.14	4.84	4.73	3.77	3.2	2.58	1.95
90	6.2	6.27	5.64	5.21	5.02	5.36	5.64	5.89
91	0.75	1.17	1.43	1.42	2.65	3.59	4.26	4.91
92	0.1	0.33	0.03	0.17	0.3	0.83	0.85	0.81
93	0.24	0.57	0.13	0.31	0.26	0.79	0.68	0.5
94	0	0.11	0	0	0	0.29	0.33	0.09
95	0.32	0.62	0.22	0.4	0.36	0.7	0.65	0.59
96	0.78	1.02	0.74	0.91	0.86	1.08	1.13	1.05
97	1.44	1.7	1.47	1.7	1.58	1.73	1.67	1.54
98	1.81	1.99	2.03	2.18	2.01	2.08	2.05	1.83
99	1.78	1.91	1.93	2.11	1.85	1.86	1.74	1.62
100	1.36	1.39	1.42	1.5	1.22	1.31	1.26	1.18
101	1.07	1.08	1.06	1.07	0.74	0.78	0.79	0.76
102	0.46	0.47	0.49	0.48	0.14	0.2	0.2	0.13
103	0	0	0	0	0	0	0	0
104	0	0	0	0	0	0	0	0
105	0	0	0	0	0	0	0	0
106	0	0	0	0	0	0	0	0
107	0	0	0	0	0	0	0	0
108	0	0	0	0	0	0	0	0
109	0	0	0	0	0	0	0	0
110	0	0	0	0	0	0	0	0
111	0	0	0	0	0	0	0	0
112	0	0	0	0	0	0	0	0
113	0	0	0	0	0	0	0	0
114	0	0	0	0	0	0	0	0
115	0	0	0	0	0	0	0	0
116	0	0	0	0	0	0	0	0
117	0	0	0	0	0	0	0	0
118	0	0	0	0	0	0	0	0
119	0	0	0	0	0	0	0	0
120	0	0	0	0	0	0	0	0
121	0	0	0	0	0	0	0	0
122	0	0	0	0	0	0	0	0
123	0	0	0	0	0	0	0	0
124	0	0	0	0	0	0	0	0
125	0	0	0	0	0	0	0	0
126	0	0	0	0	0	0	0	0
127	0	0	0	0	0	0	0	0
128	0	0	0	0	0	0	0	0



INTENSITY TABLE (cd)

	40	45	50	55	60	65	70	75
86	1.54	1.4	1.53	1.57	1.55	1.61	1.57	1.62
87	1.32	1.16	1.3	1.28	1.26	1.33	1.33	1.35
88	1.15	0.98	1.1	1.05	1.04	1.11	1.07	1.1
89	1.43	1.12	1.02	0.74	0.7	0.88	0.85	0.87
90	5.33	4.88	4.03	2.42	0.74	0.1	0	0.11
91	5.15	4.92	4.57	4.79	4.72	4.02	3.07	1.86
92	0.92	0.48	0.65	0.97	1.32	1.68	2.28	2.68
93	0.17	0	0	0	0	0	0	0
94	0	0	0	0	0	0	0	0
95	0.36	0	0	0	0.04	0	0	0
96	0.92	0.64	0.57	0.63	0.8	0.73	0.72	0.63
97	1.42	1.43	1.34	1.39	1.62	1.57	1.58	1.47
98	1.85	1.93	1.78	1.93	1.95	1.97	1.94	1.77
99	1.65	1.66	1.49	1.73	1.78	1.71	1.61	1.42
100	1.23	1.31	1.21	1.45	1.45	1.41	1.32	1.09
101	0.83	0.82	0.66	0.83	0.77	0.69	0.58	0.45
102	0.1	0	0	0	0	0	0	0
103	0	0	0	0	0	0	0	0
104	0	0	0	0	0	0	0	0
105	0	0	0	0	0	0	0	0
106	0	0	0	0	0	0	0	0
107	0	0	0	0	0	0	0	0
108	0	0	0	0	0	0	0	0
109	0	0	0	0	0	0	0	0
110	0	0	0	0	0	0	0	0
111	0	0	0	0	0	0	0	0
112	0	0	0	0	0	0	0	0
113	0	0	0	0	0	0	0	0
114	0	0	0	0	0	0	0	0
115	0	0	0	0	0	0	0	0
116	0	0	0	0	0	0	0	0
117	0	0	0	0	0	0	0	0
118	0	0	0	0	0	0	0	0
119	0	0	0	0	0	0	0	0
120	0	0	0	0	0	0	0	0
121	0	0	0	0	0	0	0	0
122	0	0	0	0	0	0	0	0
123	0	0	0	0	0	0	0	0
124	0	0	0	0	0	0	0	0
125	0	0	0	0	0	0	0	0
126	0	0	0	0	0	0	0	0
127	0	0	0	0	0	0	0	0
128	0	0	0	0	0	0	0	0



INTENSITY TABLE (cd)

	80	85	90	95	100	105	110	115
86	1.57	1.61	1.51	1.4	1.33	1.21	1.15	1
87	1.27	1.38	1.23	1.16	1.13	1	0.93	0.8
88	1	1.1	0.96	0.91	0.92	0.81	0.73	0.63
89	0.79	0.91	0.8	0.74	0.8	0.7	0.58	0.52
90	0.26	0.4	0.44	0.49	0.62	0.57	0.52	0.47
91	1.86	0.63	0.31	0.14	0.75	1.63	1.96	1.99
92	2.64	3.42	3.78	3.11	3.41	3.54	3.38	3.27
93	0	0.1	0.32	0.39	0.59	0.66	0.95	0.9
94	0	0	0	0	0	0	0.06	0.15
95	0.05	0.08	0.09	0.17	0.25	0.31	0.26	0.36
96	0.75	0.73	0.73	0.8	0.83	0.94	0.81	0.99
97	1.59	1.57	1.5	1.5	1.54	1.6	1.42	1.62
98	1.79	1.74	1.7	1.61	1.62	1.63	1.46	1.49
99	1.35	1.34	1.31	1.15	1.15	1.14	0.98	0.98
100	1.04	1.01	0.96	0.8	0.83	0.84	0.71	0.71
101	0.38	0.34	0.33	0.19	0.25	0.22	0.12	0.03
102	0	0	0	0	0	0	0	0
103	0	0	0	0	0	0	0	0
104	0	0	0	0	0	0	0	0
105	0	0	0	0	0	0	0	0
106	0	0	0	0	0	0	0	0
107	0	0	0	0	0	0	0	0
108	0	0	0	0	0	0	0	0
109	0	0	0	0	0	0	0	0
110	0	0	0	0	0	0	0	0
111	0	0	0	0	0	0	0	0
112	0	0	0	0	0	0	0	0
113	0	0	0	0	0	0	0	0
114	0	0	0	0	0	0	0	0
115	0	0	0	0	0	0	0	0
116	0	0	0	0	0	0	0	0
117	0	0	0	0	0	0	0	0
118	0	0	0	0	0	0	0	0
119	0	0	0	0	0	0	0	0
120	0	0	0	0	0	0	0	0
121	0	0	0	0	0	0	0	0
122	0	0	0	0	0	0	0	0
123	0	0	0	0	0	0	0	0
124	0	0	0	0	0	0	0	0
125	0	0	0	0	0	0	0	0
126	0	0	0	0	0	0	0	0
127	0	0	0	0	0	0	0	0
128	0	0	0	0	0	0	0	0



INTENSITY TABLE (cd)

	120	125	130	135	140	145	150	155
86	0.81	0.86	0.91	1.01	0.99	0.94	0.94	0.88
87	0.6	0.65	0.69	0.78	0.74	0.71	0.69	0.68
88	0.42	0.46	0.5	0.59	0.54	0.53	0.51	0.52
89	0.29	0.35	0.37	0.45	0.41	0.41	0.39	0.4
90	0.26	0.27	0.32	0.34	0.33	0.32	0.32	0.35
91	1.41	1.02	0.87	0.66	0.51	0.48	0.45	0.36
92	2.74	2.6	2.14	2.39	2.5	2.54	2.6	2.03
93	1.26	1.53	1.76	2.52	2.9	2.71	2.68	3.18
94	0.26	0.22	0.27	0.34	0.33	0.34	0.39	0.47
95	0.39	0.38	0.38	0.45	0.45	0.46	0.51	0.54
96	1.04	1	1.02	1.08	1.01	1	1.11	1.1
97	1.66	1.67	1.69	1.73	1.63	1.51	1.75	1.71
98	1.58	1.59	1.48	1.52	1.54	1.43	1.6	1.56
99	1.02	1.01	0.98	1.07	1.02	0.94	1.09	1.16
100	0.71	0.67	0.59	0.63	0.58	0.5	0.69	0.73
101	0.08	0.01	0	0.05	0	0	0.06	0.07
102	0	0	0	0	0	0	0	0
103	0	0	0	0	0	0	0	0
104	0	0	0	0	0	0	0	0
105	0	0	0	0	0	0	0	0
106	0	0	0	0	0	0	0	0
107	0	0	0	0	0	0	0	0
108	0	0	0	0	0	0	0	0
109	0	0	0	0	0	0	0	0
110	0	0	0	0	0	0	0	0
111	0	0	0	0	0	0	0	0
112	0	0	0	0	0	0	0	0
113	0	0	0	0	0	0	0	0
114	0	0	0	0	0	0	0	0
115	0	0	0	0	0	0	0	0
116	0	0	0	0	0	0	0	0
117	0	0	0	0	0	0	0	0
118	0	0	0	0	0	0	0	0
119	0	0	0	0	0	0	0	0
120	0	0	0	0	0	0	0	0
121	0	0	0	0	0	0	0	0
122	0	0	0	0	0	0	0	0
123	0	0	0	0	0	0	0	0
124	0	0	0	0	0	0	0	0
125	0	0	0	0	0	0	0	0
126	0	0	0	0	0	0	0	0
127	0	0	0	0	0	0	0	0
128	0	0	0	0	0	0	0	0



INTENSITY TABLE (cd)

	160	165	170	175	180	185	190	195
86	0.88	0.9	0.99	0.94	0.82	0.79	0.83	0.92
87	0.64	0.68	0.73	0.7	0.6	0.59	0.61	0.69
88	0.47	0.5	0.52	0.5	0.42	0.39	0.43	0.48
89	0.36	0.36	0.37	0.34	0.31	0.27	0.29	0.34
90	0.3	0.27	0.28	0.23	0.24	0.18	0.19	0.23
91	0.33	0.23	0.25	0.26	0.15	0	0	0
92	1.75	1.04	0.23	0	1.19	1.56	1.64	1.89
93	2.69	3.06	3.09	2.9	0.78	0.56	0.27	0.09
94	0.45	0.48	0.45	0.38	0.22	0.08	0	0
95	0.54	0.47	0.43	0.35	0.45	0.38	0.29	0.25
96	1.1	0.97	0.97	0.81	1.08	1.1	0.97	0.9
97	1.69	1.59	1.61	1.42	1.63	1.69	1.58	1.55
98	1.47	1.52	1.61	1.49	1.57	1.59	1.51	1.44
99	1.15	1.22	1.4	1.33	1.48	1.46	1.29	1.2
100	0.75	0.87	1.08	1.07	1.02	1	0.97	0.87
101	0.03	0.15	0.31	0.29	0	0.08	0.15	0.12
102	0	0	0	0	0	0	0	0
103	0	0	0	0	0	0	0	0
104	0	0	0	0	0	0	0	0
105	0	0	0	0	0	0	0	0
106	0	0	0	0	0	0	0	0
107	0	0	0	0	0	0	0	0
108	0	0	0	0	0	0	0	0
109	0	0	0	0	0	0	0	0
110	0	0	0	0	0	0	0	0
111	0	0	0	0	0	0	0	0
112	0	0	0	0	0	0	0	0
113	0	0	0	0	0	0	0	0
114	0	0	0	0	0	0	0	0
115	0	0	0	0	0	0	0	0
116	0	0	0	0	0	0	0	0
117	0	0	0	0	0	0	0	0
118	0	0	0	0	0	0	0	0
119	0	0	0	0	0	0	0	0
120	0	0	0	0	0	0	0	0
121	0	0	0	0	0	0	0	0
122	0	0	0	0	0	0	0	0
123	0	0	0	0	0	0	0	0
124	0	0	0	0	0	0	0	0
125	0	0	0	0	0	0	0	0
126	0	0	0	0	0	0	0	0
127	0	0	0	0	0	0	0	0
128	0	0	0	0	0	0	0	0



INTENSITY TABLE (cd)

	200	205	210	215	220	225	230	235
86	0.89	0.81	0.8	0.89	0.87	0.82	0.85	0.78
87	0.65	0.61	0.59	0.65	0.67	0.61	0.65	0.59
88	0.44	0.42	0.4	0.46	0.47	0.45	0.47	0.41
89	0.31	0.31	0.29	0.35	0.41	0.36	0.34	0.39
90	0.17	0.21	0.2	0.22	0.07	0	0	0
91	0	0	0	0	0.5	0.64	2.78	2.39
92	2.48	2.03	1.96	1.23	0.7	0.46	0	0
93	0	0	0	0	0	0	0	0
94	0	0	0	0	0	0	0	0
95	0.18	0.18	0.22	0.15	0.07	0	0.09	0.06
96	0.95	0.9	0.98	0.9	0.69	0.7	0.82	0.78
97	1.64	1.61	1.69	1.7	1.49	1.59	1.65	1.6
98	1.58	1.64	1.77	1.78	1.69	1.89	1.84	1.85
99	1.33	1.26	1.39	1.38	1.28	1.43	1.39	1.29
100	1.01	0.98	1.05	1.06	0.96	1.14	1.05	0.97
101	0.25	0.26	0.39	0.4	0.33	0.5	0.37	0.31
102	0	0	0	0	0	0	0	0
103	0	0	0	0	0	0	0	0
104	0	0	0	0	0	0	0	0
105	0	0	0	0	0	0	0	0
106	0	0	0	0	0	0	0	0
107	0	0	0	0	0	0	0	0
108	0	0	0	0	0	0	0	0
109	0	0	0	0	0	0	0	0
110	0	0	0	0	0	0	0	0
111	0	0	0	0	0	0	0	0
112	0	0	0	0	0	0	0	0
113	0	0	0	0	0	0	0	0
114	0	0	0	0	0	0	0	0
115	0	0	0	0	0	0	0	0
116	0	0	0	0	0	0	0	0
117	0	0	0	0	0	0	0	0
118	0	0	0	0	0	0	0	0
119	0	0	0	0	0	0	0	0
120	0	0	0	0	0	0	0	0
121	0	0	0	0	0	0	0	0
122	0	0	0	0	0	0	0	0
123	0	0	0	0	0	0	0	0
124	0	0	0	0	0	0	0	0
125	0	0	0	0	0	0	0	0
126	0	0	0	0	0	0	0	0
127	0	0	0	0	0	0	0	0
128	0	0	0	0	0	0	0	0



INTENSITY TABLE (cd)

	240	245	250	255	260	265	270	275
86	0.79	0.84	0.73	0.78	0.81	0.92	1.01	0.86
87	0.61	0.65	0.57	0.62	0.63	0.74	0.83	0.68
88	0.43	0.46	0.39	0.44	0.45	0.52	0.58	0.48
89	0.52	0.74	1.21	1.35	1.67	2.09	1.88	1.82
90	0	0	0.34	0.54	0.95	1.38	1.36	1.35
91	1.98	1.85	1.1	1.32	0.95	0.77	0.19	0.14
92	0	0	0	0	0	0	0	0
93	0	0	0	0	0	0	0	0
94	0	0	0	0	0	0	0	0
95	0.08	0	0	0	0	0	0	0
96	0.77	0.51	0.48	0.51	0.53	0.51	0.7	0.6
97	1.54	1.3	1.22	1.36	1.41	1.33	1.57	1.5
98	1.8	1.77	1.7	1.77	1.82	1.75	2.04	1.95
99	1.27	1.31	1.36	1.56	1.55	1.5	1.86	1.86
100	0.96	0.95	0.95	1.05	1	0.93	1.2	1.22
101	0.29	0.32	0.37	0.47	0.35	0.28	0.54	0.57
102	0	0	0	0	0	0	0	0
103	0	0	0	0	0	0	0	0
104	0	0	0	0	0	0	0	0
105	0	0	0	0	0	0	0	0
106	0	0	0	0	0	0	0	0
107	0	0	0	0	0	0	0	0
108	0	0	0	0	0	0	0	0
109	0	0	0	0	0	0	0	0
110	0	0	0	0	0	0	0	0
111	0	0	0	0	0	0	0	0
112	0	0	0	0	0	0	0	0
113	0	0	0	0	0	0	0	0
114	0	0	0	0	0	0	0	0
115	0	0	0	0	0	0	0	0
116	0	0	0	0	0	0	0	0
117	0	0	0	0	0	0	0	0
118	0	0	0	0	0	0	0	0
119	0	0	0	0	0	0	0	0
120	0	0	0	0	0	0	0	0
121	0	0	0	0	0	0	0	0
122	0	0	0	0	0	0	0	0
123	0	0	0	0	0	0	0	0
124	0	0	0	0	0	0	0	0
125	0	0	0	0	0	0	0	0
126	0	0	0	0	0	0	0	0
127	0	0	0	0	0	0	0	0
128	0	0	0	0	0	0	0	0



INTENSITY TABLE (cd)

	280	285	290	295	300	305	310	315
86	1.01	1.02	1.16	1.05	1.14	1.2	1.35	1.3
87	0.79	0.81	0.95	0.84	0.94	1.02	1.04	1.05
88	0.54	0.49	0.53	0.57	0.61	0.93	1.28	1.13
89	1.09	0.48	0.25	0	0.02	0.07	0.1	0.35
90	1.38	1.3	0.65	0.58	0.62	0.77	0.76	0.82
91	0.06	0.1	0	0	0	0.01	0	0
92	0	0	0	0	0	0.01	0	0.06
93	0	0	0	0	0	0	0	0.09
94	0	0	0	0	0	0	0	0.1
95	0	0	0	0	0.06	0.26	0.12	0.4
96	0.51	0.49	0.46	0.5	0.55	0.54	0.43	0.62
97	1.27	1.31	1.22	1.26	1.32	1.27	1.14	1.16
98	1.82	1.76	1.74	1.81	1.86	1.84	1.64	1.57
99	1.73	1.76	1.79	1.87	1.98	1.9	1.7	1.57
100	1.24	1.35	1.47	1.56	1.79	1.67	1.43	1.29
101	0.59	0.69	0.72	0.79	0.96	1	0.85	0.78
102	0	0	0	0	0	0.01	0.02	0
103	0	0	0	0	0	0	0	0
104	0	0	0	0	0	0	0	0
105	0	0	0	0	0	0	0	0
106	0	0	0	0	0	0	0	0
107	0	0	0	0	0	0	0	0
108	0	0	0	0	0	0	0	0
109	0	0	0	0	0	0	0	0
110	0	0	0	0	0	0	0	0
111	0	0	0	0	0	0	0	0
112	0	0	0	0	0	0	0	0
113	0	0	0	0	0	0	0	0
114	0	0	0	0	0	0	0	0
115	0	0	0	0	0	0	0	0
116	0	0	0	0	0	0	0	0
117	0	0	0	0	0	0	0	0
118	0	0	0	0	0	0	0	0
119	0	0	0	0	0	0	0	0
120	0	0	0	0	0	0	0	0
121	0	0	0	0	0	0	0	0
122	0	0	0	0	0	0	0	0
123	0	0	0	0	0	0	0	0
124	0	0	0	0	0	0	0	0
125	0	0	0	0	0	0	0	0
126	0	0	0	0	0	0	0	0
127	0	0	0	0	0	0	0	0
128	0	0	0	0	0	0	0	0



INTENSITY TABLE (cd)

	320	325	330	335	340	345	350	355
86	1.36	1.28	1.24	1.35	1.34	1.3	1.44	1.48
87	1.04	0.99	0.85	0.9	0.95	1.02	1.12	1.23
88	1.5	1.47	1.4	1.27	1.87	2.68	3.48	2.73
89	0.71	1.2	1.16	1.34	2.61	3.32	3.98	4.44
90	0.94	1	0.8	0.84	1.05	1.17	1.59	2.9
91	0	0	0	0	0	0	0.03	0.4
92	0.16	0.34	0	0	0	0	0.3	0.49
93	0.17	0.29	0	0	0	0	0.25	0.39
94	0.1	0.27	0	0	0	0	0.22	0.38
95	0.45	0.52	0.1	0.11	0.2	0.35	0.6	0.73
96	0.78	0.9	0.63	0.63	0.74	0.99	1.08	1.24
97	1.37	1.36	1.3	1.23	1.31	1.56	1.56	1.66
98	1.87	1.77	1.69	1.61	1.7	1.89	1.73	1.68
99	1.74	1.65	1.66	1.54	1.51	1.62	1.42	1.34
100	1.47	1.38	1.36	1.25	1.24	1.27	1.13	1.06
101	0.93	0.87	0.94	0.88	0.79	0.86	0.73	0.7
102	0.19	0.16	0.23	0.17	0.14	0.13	0.06	0
103	0	0	0	0	0	0	0	0
104	0	0	0	0	0	0	0	0
105	0	0	0	0	0	0	0	0
106	0	0	0	0	0	0	0	0
107	0	0	0	0	0	0	0	0
108	0	0	0	0	0	0	0	0
109	0	0	0	0	0	0	0	0
110	0	0	0	0	0	0	0	0
111	0	0	0	0	0	0	0	0
112	0	0	0	0	0	0	0	0
113	0	0	0	0	0	0	0	0
114	0	0	0	0	0	0	0	0
115	0	0	0	0	0	0	0	0
116	0	0	0	0	0	0	0	0
117	0	0	0	0	0	0	0	0
118	0	0	0	0	0	0	0	0
119	0	0	0	0	0	0	0	0
120	0	0	0	0	0	0	0	0
121	0	0	0	0	0	0	0	0
122	0	0	0	0	0	0	0	0
123	0	0	0	0	0	0	0	0
124	0	0	0	0	0	0	0	0
125	0	0	0	0	0	0	0	0
126	0	0	0	0	0	0	0	0
127	0	0	0	0	0	0	0	0
128	0	0	0	0	0	0	0	0



INTENSITY TABLE (cd)

	0	5	10	15	20	25	30	35
129	0	0	0	0	0	0	0	0
130	0	0	0	0	0	0	0	0
131	0	0	0	0	0	0	0	0
132	0	0	0	0	0	0	0	0
133	0	0	0	0	0	0	0	0
134	0	0	0	0	0	0	0	0
135	0	0	0	0	0	0	0	0
136	0	0	0	0	0	0	0	0
137	0	0	0	0	0	0	0	0
138	0	0	0	0	0	0	0	0
139	0	0	0	0	0	0	0	0
140	0	0	0	0	0	0	0	0
141	0	0	0	0	0	0	0	0
142	0	0	0	0	0	0	0	0
143	0	0	0	0	0	0	0	0
144	0	0	0	0	0	0	0	0
145	0	0	0	0	0	0	0	0
146	0	0	0	0	0	0	0	0
147	0	0	0	0	0	0	0	0
148	0	0	0	0	0	0	0	0
149	0	0	0	0	0	0	0	0
150	0	0	0	0	0	0	0	0
151	0	0	0	0	0	0	0	0
152	0	0	0	0	0	0	0	0
153	0	0	0	0	0	0	0	0
154	0	0	0	0	0	0	0	0
155	0	0	0	0	0	0	0	0
156	0	0	0	0	0	0	0	0
157	0	0	0	0	0	0	0	0
158	0	0	0	0	0	0	0	0
159	0	0	0	0	0	0	0	0
160	0	0	0	0	0	0	0	0
161	0	0	0	0	0	0	0	0
162	0	0	0	0	0	0	0	0
163	0	0	0	0	0	0	0	0
164	0	0	0	0	0	0	0	0
165	0	0	0	0	0	0	0	0
166	0	0	0	0	0	0	0	0
167	0	0	0	0	0	0	0	0
168	0	0	0	0	0	0	0	0
169	0	0	0	0	0	0	0	0
170	0	0	0	0	0	0	0	0
171	0	0	0	0	0	0	0	0



INTENSITY TABLE (cd)

	40	45	50	55	60	65	70	75
129	0	0	0	0	0	0	0	0
130	0	0	0	0	0	0	0	0
131	0	0	0	0	0	0	0	0
132	0	0	0	0	0	0	0	0
133	0	0	0	0	0	0	0	0
134	0	0	0	0	0	0	0	0
135	0	0	0	0	0	0	0	0
136	0	0	0	0	0	0	0	0
137	0	0	0	0	0	0	0	0
138	0	0	0	0	0	0	0	0
139	0	0	0	0	0	0	0	0
140	0	0	0	0	0	0	0	0
141	0	0	0	0	0	0	0	0
142	0	0	0	0	0	0	0	0
143	0	0	0	0	0	0	0	0
144	0	0	0	0	0	0	0	0
145	0	0	0	0	0	0	0	0
146	0	0	0	0	0	0	0	0
147	0	0	0	0	0	0	0	0
148	0	0	0	0	0	0	0	0
149	0	0	0	0	0	0	0	0
150	0	0	0	0	0	0	0	0
151	0	0	0	0	0	0	0	0
152	0	0	0	0	0	0	0	0
153	0	0	0	0	0	0	0	0
154	0	0	0	0	0	0	0	0
155	0	0	0	0	0	0	0	0
156	0	0	0	0	0	0	0	0
157	0	0	0	0	0	0	0	0
158	0	0	0	0	0	0	0	0
159	0	0	0	0	0	0	0	0
160	0	0	0	0	0	0	0	0
161	0	0	0	0	0	0	0	0
162	0	0	0	0	0	0	0	0
163	0	0	0	0	0	0	0	0
164	0	0	0	0	0	0	0	0
165	0	0	0	0	0	0	0	0
166	0	0	0	0	0	0	0	0
167	0	0	0	0	0	0	0	0
168	0	0	0	0	0	0	0	0
169	0	0	0	0	0	0	0	0
170	0	0	0	0	0	0	0	0
171	0	0	0	0	0	0	0	0



INTENSITY TABLE (cd)

	80	85	90	95	100	105	110	115
129	0	0	0	0	0	0	0	0
130	0	0	0	0	0	0	0	0
131	0	0	0	0	0	0	0	0
132	0	0	0	0	0	0	0	0
133	0	0	0	0	0	0	0	0
134	0	0	0	0	0	0	0	0
135	0	0	0	0	0	0	0	0
136	0	0	0	0	0	0	0	0
137	0	0	0	0	0	0	0	0
138	0	0	0	0	0	0	0	0
139	0	0	0	0	0	0	0	0
140	0	0	0	0	0	0	0	0
141	0	0	0	0	0	0	0	0
142	0	0	0	0	0	0	0	0
143	0	0	0	0	0	0	0	0
144	0	0	0	0	0	0	0	0
145	0	0	0	0	0	0	0	0
146	0	0	0	0	0	0	0	0
147	0	0	0	0	0	0	0	0
148	0	0	0	0	0	0	0	0
149	0	0	0	0	0	0	0	0
150	0	0	0	0	0	0	0	0
151	0	0	0	0	0	0	0	0
152	0	0	0	0	0	0	0	0
153	0	0	0	0	0	0	0	0
154	0	0	0	0	0	0	0	0
155	0	0	0	0	0	0	0	0
156	0	0	0	0	0	0	0	0
157	0	0	0	0	0	0	0	0
158	0	0	0	0	0	0	0	0
159	0	0	0	0	0	0	0	0
160	0	0	0	0	0	0	0	0
161	0	0	0	0	0	0	0	0
162	0	0	0	0	0	0	0	0
163	0	0	0	0	0	0	0	0
164	0	0	0	0	0	0	0	0
165	0	0	0	0	0	0	0	0
166	0	0	0	0	0	0	0	0
167	0	0	0	0	0	0	0	0
168	0	0	0	0	0	0	0	0
169	0	0	0	0	0	0	0	0
170	0	0	0	0	0	0	0	0
171	0	0	0	0	0	0	0	0



INTENSITY TABLE (cd)

	120	125	130	135	140	145	150	155
129	0	0	0	0	0	0	0	0
130	0	0	0	0	0	0	0	0
131	0	0	0	0	0	0	0	0
132	0	0	0	0	0	0	0	0
133	0	0	0	0	0	0	0	0
134	0	0	0	0	0	0	0	0
135	0	0	0	0	0	0	0	0
136	0	0	0	0	0	0	0	0
137	0	0	0	0	0	0	0	0
138	0	0	0	0	0	0	0	0
139	0	0	0	0	0	0	0	0
140	0	0	0	0	0	0	0	0
141	0	0	0	0	0	0	0	0
142	0	0	0	0	0	0	0	0
143	0	0	0	0	0	0	0	0
144	0	0	0	0	0	0	0	0
145	0	0	0	0	0	0	0	0
146	0	0	0	0	0	0	0	0
147	0	0	0	0	0	0	0	0
148	0	0	0	0	0	0	0	0
149	0	0	0	0	0	0	0	0
150	0	0	0	0	0	0	0	0
151	0	0	0	0	0	0	0	0
152	0	0	0	0	0	0	0	0
153	0	0	0	0	0	0	0	0
154	0	0	0	0	0	0	0	0
155	0	0	0	0	0	0	0	0
156	0	0	0	0	0	0	0	0
157	0	0	0	0	0	0	0	0
158	0	0	0	0	0	0	0	0
159	0	0	0	0	0	0	0	0
160	0	0	0	0	0	0	0	0
161	0	0	0	0	0	0	0	0
162	0	0	0	0	0	0	0	0
163	0	0	0	0	0	0	0	0
164	0	0	0	0	0	0	0	0
165	0	0	0	0	0	0	0	0
166	0	0	0	0	0	0	0	0
167	0	0	0	0	0	0	0	0
168	0	0	0	0	0	0	0	0
169	0	0	0	0	0	0	0	0
170	0	0	0	0	0	0	0	0
171	0	0	0	0	0	0	0	0



INTENSITY TABLE (cd)

	160	165	170	175	180	185	190	195
129	0	0	0	0	0	0	0	0
130	0	0	0	0	0	0	0	0
131	0	0	0	0	0	0	0	0
132	0	0	0	0	0	0	0	0
133	0	0	0	0	0	0	0	0
134	0	0	0	0	0	0	0	0
135	0	0	0	0	0	0	0	0
136	0	0	0	0	0	0	0	0
137	0	0	0	0	0	0	0	0
138	0	0	0	0	0	0	0	0
139	0	0	0	0	0	0	0	0
140	0	0	0	0	0	0	0	0
141	0	0	0	0	0	0	0	0
142	0	0	0	0	0	0	0	0
143	0	0	0	0	0	0	0	0
144	0	0	0	0	0	0	0	0
145	0	0	0	0	0	0	0	0
146	0	0	0	0	0	0	0	0
147	0	0	0	0	0	0	0	0
148	0	0	0	0	0	0	0	0
149	0	0	0	0	0	0	0	0
150	0	0	0	0	0	0	0	0
151	0	0	0	0	0	0	0	0
152	0	0	0	0	0	0	0	0
153	0	0	0	0	0	0	0	0
154	0	0	0	0	0	0	0	0
155	0	0	0	0	0	0	0	0
156	0	0	0	0	0	0	0	0
157	0	0	0	0	0	0	0	0
158	0	0	0	0	0	0	0	0
159	0	0	0	0	0	0	0	0
160	0	0	0	0	0	0	0	0
161	0	0	0	0	0	0	0	0
162	0	0	0	0	0	0	0	0
163	0	0	0	0	0	0	0	0
164	0	0	0	0	0	0	0	0
165	0	0	0	0	0	0	0	0
166	0	0	0	0	0	0	0	0
167	0	0	0	0	0	0	0	0
168	0	0	0	0	0	0	0	0
169	0	0	0	0	0	0	0	0
170	0	0	0	0	0	0	0	0
171	0	0	0	0	0	0	0	0



INTENSITY TABLE (cd)

	200	205	210	215	220	225	230	235
129	0	0	0	0	0	0	0	0
130	0	0	0	0	0	0	0	0
131	0	0	0	0	0	0	0	0
132	0	0	0	0	0	0	0	0
133	0	0	0	0	0	0	0	0
134	0	0	0	0	0	0	0	0
135	0	0	0	0	0	0	0	0
136	0	0	0	0	0	0	0	0
137	0	0	0	0	0	0	0	0
138	0	0	0	0	0	0	0	0
139	0	0	0	0	0	0	0	0
140	0	0	0	0	0	0	0	0
141	0	0	0	0	0	0	0	0
142	0	0	0	0	0	0	0	0
143	0	0	0	0	0	0	0	0
144	0	0	0	0	0	0	0	0
145	0	0	0	0	0	0	0	0
146	0	0	0	0	0	0	0	0
147	0	0	0	0	0	0	0	0
148	0	0	0	0	0	0	0	0
149	0	0	0	0	0	0	0	0
150	0	0	0	0	0	0	0	0
151	0	0	0	0	0	0	0	0
152	0	0	0	0	0	0	0	0
153	0	0	0	0	0	0	0	0
154	0	0	0	0	0	0	0	0
155	0	0	0	0	0	0	0	0
156	0	0	0	0	0	0	0	0
157	0	0	0	0	0	0	0	0
158	0	0	0	0	0	0	0	0
159	0	0	0	0	0	0	0	0
160	0	0	0	0	0	0	0	0
161	0	0	0	0	0	0	0	0
162	0	0	0	0	0	0	0	0
163	0	0	0	0	0	0	0	0
164	0	0	0	0	0	0	0	0
165	0	0	0	0	0	0	0	0
166	0	0	0	0	0	0	0	0
167	0	0	0	0	0	0	0	0
168	0	0	0	0	0	0	0	0
169	0	0	0	0	0	0	0	0
170	0	0	0	0	0	0	0	0
171	0	0	0	0	0	0	0	0



INTENSITY TABLE (cd)

	240	245	250	255	260	265	270	275
129	0	0	0	0	0	0	0	0
130	0	0	0	0	0	0	0	0
131	0	0	0	0	0	0	0	0
132	0	0	0	0	0	0	0	0
133	0	0	0	0	0	0	0	0
134	0	0	0	0	0	0	0	0
135	0	0	0	0	0	0	0	0
136	0	0	0	0	0	0	0	0
137	0	0	0	0	0	0	0	0
138	0	0	0	0	0	0	0	0
139	0	0	0	0	0	0	0	0
140	0	0	0	0	0	0	0	0
141	0	0	0	0	0	0	0	0
142	0	0	0	0	0	0	0	0
143	0	0	0	0	0	0	0	0
144	0	0	0	0	0	0	0	0
145	0	0	0	0	0	0	0	0
146	0	0	0	0	0	0	0	0
147	0	0	0	0	0	0	0	0
148	0	0	0	0	0	0	0	0
149	0	0	0	0	0	0	0	0
150	0	0	0	0	0	0	0	0
151	0	0	0	0	0	0	0	0
152	0	0	0	0	0	0	0	0
153	0	0	0	0	0	0	0	0
154	0	0	0	0	0	0	0	0
155	0	0	0	0	0	0	0	0
156	0	0	0	0	0	0	0	0
157	0	0	0	0	0	0	0	0
158	0	0	0	0	0	0	0	0
159	0	0	0	0	0	0	0	0
160	0	0	0	0	0	0	0	0
161	0	0	0	0	0	0	0	0
162	0	0	0	0	0	0	0	0
163	0	0	0	0	0	0	0	0
164	0	0	0	0	0	0	0	0
165	0	0	0	0	0	0	0	0
166	0	0	0	0	0	0	0	0
167	0	0	0	0	0	0	0	0
168	0	0	0	0	0	0	0	0
169	0	0	0	0	0	0	0	0
170	0	0	0	0	0	0	0	0
171	0	0	0	0	0	0	0	0



INTENSITY TABLE (cd)

	280	285	290	295	300	305	310	315
129	0	0	0	0	0	0	0	0
130	0	0	0	0	0	0	0	0
131	0	0	0	0	0	0	0	0
132	0	0	0	0	0	0	0	0
133	0	0	0	0	0	0	0	0
134	0	0	0	0	0	0	0	0
135	0	0	0	0	0	0	0	0
136	0	0	0	0	0	0	0	0
137	0	0	0	0	0	0	0	0
138	0	0	0	0	0	0	0	0
139	0	0	0	0	0	0	0	0
140	0	0	0	0	0	0	0	0
141	0	0	0	0	0	0	0	0
142	0	0	0	0	0	0	0	0
143	0	0	0	0	0	0	0	0
144	0	0	0	0	0	0	0	0
145	0	0	0	0	0	0	0	0
146	0	0	0	0	0	0	0	0
147	0	0	0	0	0	0	0	0
148	0	0	0	0	0	0	0	0
149	0	0	0	0	0	0	0	0
150	0	0	0	0	0	0	0	0
151	0	0	0	0	0	0	0	0
152	0	0	0	0	0	0	0	0
153	0	0	0	0	0	0	0	0
154	0	0	0	0	0	0	0	0
155	0	0	0	0	0	0	0	0
156	0	0	0	0	0	0	0	0
157	0	0	0	0	0	0	0	0
158	0	0	0	0	0	0	0	0
159	0	0	0	0	0	0	0	0
160	0	0	0	0	0	0	0	0
161	0	0	0	0	0	0	0	0
162	0	0	0	0	0	0	0	0
163	0	0	0	0	0	0	0	0
164	0	0	0	0	0	0	0	0
165	0	0	0	0	0	0	0	0
166	0	0	0	0	0	0	0	0
167	0	0	0	0	0	0	0	0
168	0	0	0	0	0	0	0	0
169	0	0	0	0	0	0	0	0
170	0	0	0	0	0	0	0	0
171	0	0	0	0	0	0	0	0



INTENSITY TABLE (cd)

	320	325	330	335	340	345	350	355
129	0	0	0	0	0	0	0	0
130	0	0	0	0	0	0	0	0
131	0	0	0	0	0	0	0	0
132	0	0	0	0	0	0	0	0
133	0	0	0	0	0	0	0	0
134	0	0	0	0	0	0	0	0
135	0	0	0	0	0	0	0	0
136	0	0	0	0	0	0	0	0
137	0	0	0	0	0	0	0	0
138	0	0	0	0	0	0	0	0
139	0	0	0	0	0	0	0	0
140	0	0	0	0	0	0	0	0
141	0	0	0	0	0	0	0	0
142	0	0	0	0	0	0	0	0
143	0	0	0	0	0	0	0	0
144	0	0	0	0	0	0	0	0
145	0	0	0	0	0	0	0	0
146	0	0	0	0	0	0	0	0
147	0	0	0	0	0	0	0	0
148	0	0	0	0	0	0	0	0
149	0	0	0	0	0	0	0	0
150	0	0	0	0	0	0	0	0
151	0	0	0	0	0	0	0	0
152	0	0	0	0	0	0	0	0
153	0	0	0	0	0	0	0	0
154	0	0	0	0	0	0	0	0
155	0	0	0	0	0	0	0	0
156	0	0	0	0	0	0	0	0
157	0	0	0	0	0	0	0	0
158	0	0	0	0	0	0	0	0
159	0	0	0	0	0	0	0	0
160	0	0	0	0	0	0	0	0
161	0	0	0	0	0	0	0	0
162	0	0	0	0	0	0	0	0
163	0	0	0	0	0	0	0	0
164	0	0	0	0	0	0	0	0
165	0	0	0	0	0	0	0	0
166	0	0	0	0	0	0	0	0
167	0	0	0	0	0	0	0	0
168	0	0	0	0	0	0	0	0
169	0	0	0	0	0	0	0	0
170	0	0	0	0	0	0	0	0
171	0	0	0	0	0	0	0	0



INTENSITY TABLE (cd)

	0	5	10	15	20	25	30	35
172	0	0	0	0	0	0	0	0
173	0	0	0	0	0	0	0	0
174	0	0	0	0	0	0	0	0
175	0	0	0	0	0	0	0	0
176	0	0	0	0	0	0	0	0
177	0	0	0	0	0	0	0	0
178	0	0	0	0	0	0	0	0
179	0	0	0	0	0	0	0	0
180	0	0	0	0	0	0	0	0
	40	45	50	55	60	65	70	75
172	0	0	0	0	0	0	0	0
173	0	0	0	0	0	0	0	0
174	0	0	0	0	0	0	0	0
175	0	0	0	0	0	0	0	0
176	0	0	0	0	0	0	0	0
177	0	0	0	0	0	0	0	0
178	0	0	0	0	0	0	0	0
179	0	0	0	0	0	0	0	0
180	0	0	0	0	0	0	0	0
	80	85	90	95	100	105	110	115
172	0	0	0	0	0	0	0	0
173	0	0	0	0	0	0	0	0
174	0	0	0	0	0	0	0	0
175	0	0	0	0	0	0	0	0
176	0	0	0	0	0	0	0	0
177	0	0	0	0	0	0	0	0
178	0	0	0	0	0	0	0	0
179	0	0	0	0	0	0	0	0
180	0	0	0	0	0	0	0	0
	120	125	130	135	140	145	150	155
172	0	0	0	0	0	0	0	0
173	0	0	0	0	0	0	0	0
174	0	0	0	0	0	0	0	0
175	0	0	0	0	0	0	0	0
176	0	0	0	0	0	0	0	0
177	0	0	0	0	0	0	0	0
178	0	0	0	0	0	0	0	0
179	0	0	0	0	0	0	0	0
180	0	0	0	0	0	0	0	0



INTENSITY TABLE (cd)

	160	165	170	175	180	185	190	195
172	0	0	0	0	0	0	0	0
173	0	0	0	0	0	0	0	0
174	0	0	0	0	0	0	0	0
175	0	0	0	0	0	0	0	0
176	0	0	0	0	0	0	0	0
177	0	0	0	0	0	0	0	0
178	0	0	0	0	0	0	0	0
179	0	0	0	0	0	0	0	0
180	0	0	0	0	0	0	0	0
	200	205	210	215	220	225	230	235
172	0	0	0	0	0	0	0	0
173	0	0	0	0	0	0	0	0
174	0	0	0	0	0	0	0	0
175	0	0	0	0	0	0	0	0
176	0	0	0	0	0	0	0	0
177	0	0	0	0	0	0	0	0
178	0	0	0	0	0	0	0	0
179	0	0	0	0	0	0	0	0
180	0	0	0	0	0	0	0	0
	240	245	250	255	260	265	270	275
172	0	0	0	0	0	0	0	0
173	0	0	0	0	0	0	0	0
174	0	0	0	0	0	0	0	0
175	0	0	0	0	0	0	0	0
176	0	0	0	0	0	0	0	0
177	0	0	0	0	0	0	0	0
178	0	0	0	0	0	0	0	0
179	0	0	0	0	0	0	0	0
180	0	0	0	0	0	0	0	0
	280	285	290	295	300	305	310	315
172	0	0	0	0	0	0	0	0
173	0	0	0	0	0	0	0	0
174	0	0	0	0	0	0	0	0
175	0	0	0	0	0	0	0	0
176	0	0	0	0	0	0	0	0
177	0	0	0	0	0	0	0	0
178	0	0	0	0	0	0	0	0
179	0	0	0	0	0	0	0	0
180	0	0	0	0	0	0	0	0



INTENSITY TABLE (cd)

	320	325	330	335	340	345	350	355
172	0	0	0	0	0	0	0	0
173	0	0	0	0	0	0	0	0
174	0	0	0	0	0	0	0	0
175	0	0	0	0	0	0	0	0
176	0	0	0	0	0	0	0	0
177	0	0	0	0	0	0	0	0
178	0	0	0	0	0	0	0	0
179	0	0	0	0	0	0	0	0
180	0	0	0	0	0	0	0	0

END OF TEST REPORT